

CuBrAlcoTM

Professional Plumbing Products



UK Trade Catalogue

Tel: 01562 825152

www.cubralco.com

E: sales@cubralco.com

CuBrAlcoTM

DELIVERY SERVICES

*** FREE NEXT DAY DELIVERY AS STANDARD ***

Express Service Charged At:

10:30 £24.00

12:00 £15.00

**For orders received by 1PM we offer next day delivery, up to 5.30pm, as standard on all fittings and palletised orders. Contact sales office to confirm carriage paid order value **

** Delivery to mainland UK only. No straight lengths of copper tube can be sent out on next day service. Orders received on Friday will be delivered on Monday**

** Orders under carriage paid value will incur a handling charge of £8.50*

EASY ORDERING



Online

www.cubralco.com



Email





sales@cubralco.com



Telephone

01562 825152

Contents

3 - 10		Pipe Clips	41 - 42
11- 15		Lead Loc	43 - 43
16 - 19		Radiator Valves	44 - 45
20 - 20	Copper Tube to BS EN1057	Gastite	46 - 47
21 - 25	End Feed Fittings to BS EN1254-1	Gas & Oil	48 - 50
26 - 26	TradeX Contract End Feed	Flexible Connectors	51 - 51
27 - 30	Compression Fittings to BS EN1254-2	Consumables	52 - 52
31 - 31	Chrome Compression Fittings to BS EN1254-2		53 - 53
32 - 33	Lead Free Solder Ring Fittings to BS EN1254-2	Central and Water Heating	54 -54
34 - 40	Valves and Brassware	Thomas Dudley Bathroom Products	55 -57

Elbows



90 Degree Elbow

CODE	90 DEGREE ELBOW	BOX	BAG
PFEL15	15mm x 90° Elbow	120	10
PFEL22	22mm x 90° Elbow	50	10
PFEL28	28mm x 90° Elbow	30	5
PFEL35	35mm x 90° Elbow	10	5
PFEL42	42mm x 90° Elbow	8	2
PFEL54	54mm x 90° Elbow	6	2



90 Degree Street

CODE	90 DEGREE STREET ELBOW	BOX	BAG
PFELS15	15mm x 90° Street Elbow	120	10
PFELS22	22mm x 90° Street Elbow	50	10
PFELS28	28mm x 90° Street Elbow	30	5
PFELS35	35mm x 90° Street Elbow	10	5
PFELS42	42mm x 90° Street Elbow	8	2
PFELS54	54mm x 90° Street Elbow	6	2



45 Degree Elbow

CODE	45 DEGREE ELBOW	BOX	BAG
PFEL1545	15mm x 45° Elbow	120	10
PFEL2245	22mm x 45° Elbow	60	10
PFEL2845	28mm x 45° Elbow	30	5
PFEL3545	35mm x 45° Elbow	30	5
PFEL4245	42mm x 45° Elbow	12	2
PFEL5445	54mm x 45° Elbow	6	2



45 Degree Street

CODE	45 DEGREE STREET ELBOW	BOX	BAG
PFELS1545	15mm x 45° Street Elbow	120	10
PFELS2245	22mm x 45° Street Elbow	60	10
PFELS2845	28mm x 45° Street Elbow	30	5
PFELS3545	35mm x 45° Street Elbow	20	2
PFELS4245	42mm x 45° Street Elbow	12	2
PFELS5445	54mm x 45° Street Elbow	6	2

One End Reducing Tee



CODE	ONE END REDUCING TEE	BOX	BAG
PFTE221522	22mm x 15mm x 22mm Tee	40	5
PFTE282228	28mm x 22mm x 28mm Tee	40	5
PFTE221515	22mm x 15mm x 15mm Tee	40	5
PFTE282222	28mm x 22mm x 22mm Tee	40	5

Tees



Equal Tee

CODE	EQUAL TEE	BOX	BAG
PFTE15	15mm Equal Tee	80	10
PFTE22	22mm Equal Tee	40	10
PFTE28	28mm Equal Tee	25	5
PFTE35	35mm Equal Tee	10	5
PFTE42	42mm Equal Tee	8	2
PFTE54	54mm Equal Tee	4	2



Branch Reducing Tee

CODE	BRANCH REDUCING TEE	BOX	BAG
PFTE222215	22mm x 22mm x 15mm Tee	40	5
PFTE282815	28mm x 28mm x 15mm Tee	30	2
PFTE282822	28mm x 28mm x 22mm Tee	30	2
PFTE353515	35mm x 35mm x 15mm Tee	16	1
PFTE353522	35mm x 35mm x 22mm Tee	16	1
PFTE353528	35mm x 35mm x 28mm Tee	16	1
PFTE424215	42mm x 42mm x 15mm Tee	12	1
PFTE424222	42mm x 42mm x 22mm Tee	12	1
PFTE424228	42mm x 42mm x 28mm Tee	12	1
PFTE424235	42mm x 42mm x 35mm Tee	10	1
PFTE545422	54mm x 54mm x 22mm Tee	6	1
PFTE545428	54mm x 54mm x 28mm Tee	6	1
PFTE545435	54mm x 54mm x 35mm Tee	6	1
PFTE545442	54mm x 54mm x 42mm Tee	6	1

Couplers



Coupler

CODE	COUPLER	BOX	BAG
PFCO15	15mm Coupler	150	10
PFCO22	22mm Coupler	80	10
PFCO28	28mm Coupler	50	5
PFCO35	35mm Coupler	25	5
PFCO42	42mm Coupler	20	2
PFCO54	54mm Coupler	12	2



Reducing Coupler

CODE	REDUCING COUPLER	BOX	BAG
PFRC2215	22mm x 15mm Reducing	120	10
PFRC2815	28mm x 15mm Reducing	80	10
PFRC2822	28mm x 22mm Reducing	80	5
PFRC3515	35mm x 15mm Reducing	80	5
PFRC3522	35mm x 22mm Reducing	80	5
PFRC3528	35mm x 28mm Reducing	80	5
PFRC4222	42mm x 22mm Reducing	50	5
PFRC4228	42mm x 28mm Reducing	50	5
PFRC4235	42mm x 35mm Reducing	50	5
PFRC5422	54mm x 22mm Reducing	50	5
PFRC5428	54mm x 28mm Reducing	50	5
PFRC5435	54mm x 35mm Reducing	50	5
PFRC5442	54mm x 42mm Reducing	50	5



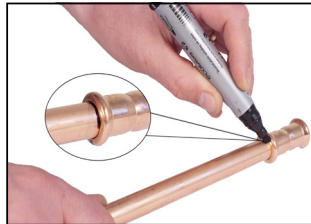
Slip Coupler

CODE	SLIP COUPLER	BOX	BAG
PFSC15	15mm Slip Coupler	100	10
PFSC22	22mm Slip Coupler	50	10
PFSC28	28mm Slip Coupler	30	5
PFSC35	35mm Slip Coupler	25	5
PFSC42	42mm Slip Coupler	12	2
PFSC54	54mm Slip Coupler	8	2



Fitting Reducer

CODE	FITTING REDUCER	BOX	BAG
PFRE2215	22mm x 15mm Reducer	120	10
PFRE2815	28mm x 15mm Reducer	80	10
PFRE2822	28mm x 22mm Reducer	80	5
PFRE3515	35mm x 15mm Reducer	24	2
PFRE3522	35mm x 22mm Reducer	40	5
PFRE3528	35mm x 28mm Reducer	40	5
PFRE4222	42mm x 22mm Reducer	24	2
PFRE4228	42mm x 28mm Reducer	24	2
PFRE4235	42mm x 35mm Reducer	24	2
PFRE5422	54mm x 22mm Reducer	24	2
PFRE5428	54mm x 28mm Reducer	24	2
PFRE5435	54mm x 35mm Reducer	12	2
PFRE5442	54mm x 42mm Reducer	12	2



Our installation instructions on page 10

End Cap



CODE	END CAP	BOX	BAG
PFEC15	15mm End Cap	300	10
PFEC22	22mm End Cap	150	5
PFEC28	28mm End Cap	120	5
PFEC35	35mm End Cap	60	10
PFEC42	42mm End Cap	28	4
PFEC54	54mm End Cap	20	4

Cross Over



CODE	FULL CROSS OVER	BOX	BAG
PFFCO15	15mm Full Cross Over	40	10
PFFCO22	22mm Full Cross Over	20	10



CODE	PART CROSS OVER	BOX	BAG
PFPCO15	15mm Part Cross Over	50	10
PFPCO22	22mm Part Cross Over	20	10

Threaded Brass BSPP



Male Iron Coupler

CODE	MALE IRON COUPLER	BOX	BAG
PFCO15MI	Press Fit 15mm x 1/2" MI Coupler	200	10
PFCO22MI	Press Fit 22mm x 3/4" MI Coupler	100	10
PFCO28MI	Press Fit 28mm x 1" MI Coupler	100	10
PFCO35MI	Press Fit 35mm x 1.1/4" MI Coupler	30	5
PFCO42MI	Press Fit 42mm x 1.1/2" MI Coupler	20	2
PFCO54MI	Press Fit 54mm x 2" MI Coupler	12	2



Female Iron Coupler

CODE	FEMALE IRON COUPLER	BOX	BAG
PFCO15FI	Press Fit 15mm x 1/2" FI Coupler	150	10
PFCO22FI	Press Fit 22mm x 3/4" FI Coupler	80	10
PFCO28FI	Press Fit 28mm x 1" FI Coupler	50	10
PFCO35FI	Press Fit 35mm x 1.1/4" FI Coupler	30	5
PFCO42FI	Press Fit 42mm x 1.1/2" FI Coupler	30	2
PFCO54FI	Press Fit 54mm x 2" FI Coupler	12	2



Male Iron Elbow

CODE	MALE IRON ELBOW	BOX	BAG
PFEL15MI	Press fit 15mm x 1/2" MI 90°	120	10
PFEL22MI	Press fit 22mm x 3/4" MI 90°	60	10
PFEL28MI	Press fit 28mm x 1" MI 90°	40	5



Female Iron Elbow

CODE	FEMALE IORN ELBOW	BOX	BAG
PFEL15FI	Press fit 15mm x 1/2" FI 90°	100	10
PFEL22FI	Press fit 22mm x 3/4" FI 90°	60	10
PFEL28FI	Press fit 28mm x 1" FI 90°	35	5

Wall plate elbow



CODE	WALL PLATE ELBOW	BOX	BAG
PFELWP15	15mm x 1/2" FI Wall Plate Elbow	50	5

Straight Union Coupler



CODE	STRAIGHT UNION COUPLERS	BOX	BAG
PFUCO151/2	15mm x 1/2" CU x MI Union Coupler	70	5
PFUCO223/4	22mm x 3/4" CU x MI Union Coupler	50	5
PFUCO281	28mm x 1" CU x MI Union Coupler	25	5

Female Iron Branch Reducing Tee



CODE	FEMALE IRON BRANCH REDUCING TEE	BOX	BAG
PFTE15151/2	15mm x 15mm x 1/2" Branch Reducing Tee	60	10
PFTE22221/2	22mm x 22mm x 1/2" Branch Reducing Tee	40	10

Leak before Press Technology

- WRAS Approved O Rings
- Black EPDM Rubber
- The O Ring includes three water pathways that allow water to leak past at low pressure 0.1 - 6.0 bar. Helping the installer to identify joints that are not pressed, during commissioning



Straight tap connector



CODE	STRAIGHT TAP CONNECTORS	BOX	BAG
PFSTC151/2	15mm x 1/2" Straight tap connector	120	10
PFSTC223/4	22mm x 3/4" Straight tap connector	80	10

Gas Press Fit

Suitable for LPG & Natural Gas



Female Iron Elbow

CODE	FEMALE IORN ELBOW	BOX	BAG
GPFEL15FI	Press fit 15mm x 1/2" FI 90°	10	10
GPFEL22FI	Press fit 22mm x 3/4" FI 90°	10	10
GPFEL28FI	Press fit 28mm x 1" FI 90°	5	5



Female Iron Coupler

CODE	FEMALE IRON COUPLER	BOX	BAG
GPFCO15FI	Press Fit 15mm x 1/2" FI Coupler	10	10
GPFCO22FI	Press Fit 22mm x 3/4" FI Coupler	10	10
GPFCO28FI	Press Fit 28mm x 1" FI Coupler	10	10



Wall Plate Elbow

CODE	WALL PLATE ELBOW	BOX	BAG
GPFELWP15	15mm x 1/2" FI Wall Plate Elbow	5	5



Male Iron Elbow

CODE	MALE IRON ELBOW	BOX	BAG
GPFEL15MI	Press fit 15mm x 1/2" MI 90°	10	10
GPFEL22MI	Press fit 22mm x 3/4" MI 90°	10	10
GPFEL28MI	Press fit 28mm x 1" MI 90°	5	5



Male Iron Coupler

CODE	MALE IRON COUPLER	BOX	BAG
GPFCO15MI	Press Fit 15mm x 1/2" MI Coupler	10	10
GPFCO22MI	Press Fit 22mm x 3/4" MI Coupler	10	10
GPFCO28MI	Press Fit 28mm x 1" MI Coupler	10	10



Branch Reducing Tee

CODE	BRANCH REDUCING TEE	BOX	BAG
GPFTE15151/2	15mm x 15mm x 1/2" Branch Reducing Tee	10	10
GPFTE22221/2	22mm x 22mm x 1/2" Branch Reducing Tee	10	10

Gas Press Fit

Suitable for LPG & Natural Gas



End Cap

CODE	END CAP	BOX	BAG
GPFE15	15mm End Cap	300	10
GPFE22	22mm End Cap	150	5
GPFE28	28mm End Cap	120	2
GPFE35	35mm End Cap	60	10



Equal Tee

CODE	EQUAL TEE	BOX	BAG
GPFE15	15mm Equal Tee	80	10
GPFE22	22mm Equal Tee	40	10
GPFE28	28mm Equal Tee	25	5



90 Degree Elbow

CODE	90 DEGREE ELBOW	BOX	BAG
GPFE15	15mm x 90° Elbow	120	10
GPFE22	22mm x 90° Elbow	50	10
GPFE28	28mm x 90° Elbow	30	5
GPFE35	35mm x 90° Elbow	10	5



45 Degree Elbow

CODE	45 DEGREE ELBOW	BOX	BAG
GPFE1545	15mm x 45° Elbow	120	10
GPFE2245	22mm x 45° Elbow	60	10
GPFE2845	28mm x 45° Elbow	30	5
GPFE3545	35mm x 45° Elbow	30	5



45 Degree Street

CODE	45 DEGREE STREET ELBOW	BOX	BAG
GPFE1545	15mm x 45° Street Elbow	120	10
GPFE2245	22mm x 45° Street Elbow	60	10
GPFE2845	28mm x 45° Street Elbow	30	5
GPFE3545	35mm x 45° Street Elbow	20	2



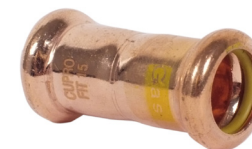
Reducing Coupler

CODE	REDUCING COUPLER	BOX	BAG
GPFR2215	22mm x 15mm Reducing	120	10
GPFR2815	28mm x 15mm Reducing	80	10
GPFR2822	28mm x 22mm Reducing	80	5



Fitting Reducer

CODE	FITTING REDUCER	BOX	BAG
GPFR2215	22mm x 15mm Reducer	120	10
GPFR2815	28mm x 15mm Reducer	80	10
GPFR2822	28mm x 22mm Reducer	80	5
GPFR3522	35mm x 22mm Reducer	40	5
GPFR3528	35mm x 28mm Reducer	40	5



Slip Coupler

CODE	SLIP COUPLER	BOX	BAG
GPFCO15	15mm Slip Coupler	150	10
GPFCO22	22mm Slip Coupler	80	10
GPFCO28	28mm Slip Coupler	50	5
GPFCO35	35mm Slip Coupler	25	5



Reducing Tee

CODE	REDUCING TEE	BOX	BAG
GPFE221522	22mm x 15mm x 22mm Tee	40	5
GPFE222215	22mm x 22mm x 15mm Tee	40	5
GPFE282815	28mm x 28mm x 15mm Tee	30	2
GPFE282822	28mm x 28mm x 22mm Tee	30	2
GPFE353515	35mm x 35mm x 15mm Tee	16	1
GPFE353522	35mm x 35mm x 22mm Tee	16	1
GPFE353528	35mm x 35mm x 28mm Tee	16	1



90 Degree Street

CODE	90 DEGREE STREET ELBOW	BOX	BAG
GPFE15	15mm x 90° Street Elbow	120	10
GPFE22	22mm x 90° Street Elbow	50	10
GPFE28	28mm x 90° Street Elbow	30	5
GPFE35	35mm x 90° Street Elbow	10	5

Press Fit Valves



Red & Blue 1/4 Turn

- 15mm - 54mm Supplied C/W spare blue handle
- Full Bore
- Nickel plated
- M profile EN1254-7
- PN16
- Working Temperature -10° to +85°
- All Sizes WRAS Approved

CODE	RED & BLUE 1/4 TURN LEVER BALL VALVE	BOX	BAG
PFLBV15	15mm	80	1
PFLBV22	22mm	60	1
PFLBV28	28mm	24	1
PFLBV35	35mm	18	1
PFLBV42	42mm	14	1
PFLBV54	54mm	8	1



Red & Blue T Handle

- 15mm - 28mm Supplied C/W spare blue handle
- Full Bore
- Nickel plated
- M profile EN1254-7
- PN16
- Working Temperature -10° to +85°
- All Sizes WRAS Approved

CODE	RED & BLUE 1/4 TURN BUTTERFLY HANDLE BALL VALVE	BOX	BAG
PFTBV15	15mm	75	1
PFTBV22	22mm	60	1
PFTBV28	28mm	24	1



Our installation instructions on page 10

Stop Cock



Stop Cock EN1213

CODE	STOP COCK EN1213	BOX	BAG
PFSTC15	15mm Stop Cock EN1213	50	1
PFSTC22	22mm Stop Cock EN1213	25	1

Deburring tool



CODE	DEBURRING TOOL	BOX	BAG
DEBURR1	Deburrer 6mm -38mm Internal & External	1	1

Valves



Angled Isolating Valve

CODE	ANGLED ISOLATING VALVE	BOX	BAG
PFIVCEL15	15mm Angled Isolating Valve	200	10



Angled Service Valve

CODE	ANGLED SERVICE VALVE	BOX	BAG
PFSVA15	15mm x 1/2" Angled Service Valve	150	5



Straight Service Valve

CODE	STRAIGHT SERVICE VALVE	BOX	BAG
PFSVS15	15mm x 1/2" Straight Service Valve	150	5



Isolation Valve

CODE	ISOLATION VALVE	BOX	BAG
PFIVC15	15mm Isolation Valve	200	10
PFIVC22	22mm Isolation Valve	150	5



Full Bore Chrome

- M profile EN1254-7
- PN16
- Working Temperature -10° to +85°
- All Sizes WRAS Approved

CODE	FULL BORE CHROME ISOLATING VALVE	BOX	BAG
PFIVCFB15	15mm Full Bore Chrome	50	1
PFIVCFB22	22mm Full Bore Chrome	50	1



Single Check Valve

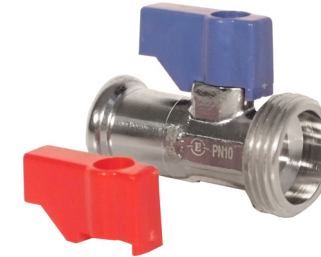
CODE	SINGLE CHECK VALVE	BOX	BAG
PFCVS15	15mm Single Check Valve	200	10
PFCVS22	22mm Single Check Valve	100	5
PFCVS28	28mm Single Check Valve	80	1



Double Check Valve

CODE	DOUBLE CHECK VALVE	BOX	BAG
PFCVD15	15mm Double Check Valve	50	10
PFCVD22	22mm Double Check Valve	50	5
PFCVD28	28mm Double Check Valve	50	1

Washing Valves



Straight Washing Valve

CODE	STRAIGHT WASHING VALVE	BOX	BAG
PFWMTS15	15mm x 3/4" Straight Washing Valve	150	1



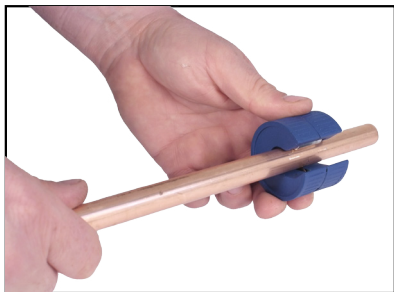
Angled Washing Valve

CODE	ANGLED WASHING VALVE	BOX	BAG
PFWMTA15	15mm x 3/4" Angled Washing Valve	100	1



Tee Washing Valve

CODE	TEE WASHING VALVE	BOX	BAG
PFWMTT15	15mm x 15mm x 3/4" Angled Washing Valve	70	1



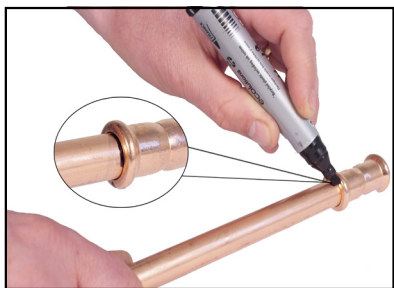
CUT THE PIPE

- Cut the pipe using a wheeled pipe cutting tool.
- Ensure the pipe is cut completely square.
- Ensure the pipe ends are free from any scratches or damage no less than the socket depth.



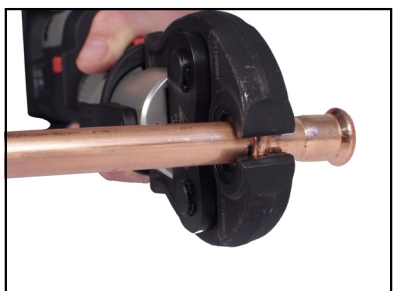
REMOVE BURRS

- Remove external and internal burrs and sharp edges using an appropriate deburring tool.
- Check for any remaining burrs, using a suitable abrasive cloth to remove any remaining burrs.
- The pipe for insertion must be free from any oil or chemical residue



MARK INSERTION DEPTH

- Before inserting the pipe ensure the O-ring in the fitting is free of damage and seated correctly
- Insert the pipe until it reaches the stop inside the fitting.
(N.B repair couplings do not have pipe stop, both ends of the pipe must meet in the middle)
- The depth mark on the pipe should touch the face of the fitting, so that any movement of the joint before pressing can be detected.



PRESS THE JOINT

- Pressing should only start when the pipe is fully inserted into the fitting.
- Choose the correct size and profile Jaw for the fitting you are pressing.
- The Jaws must be placed squarely on the fitting (90° to the assembly)
- We recommend the use of Zpress tools, however, Cupro-Fit are compatible with all major brands of press fit tools.

Z-PRESS

PZ-1930

Battery Powerd Mechanical Press Tool



CODE	PRESS TOOL KIT PZ 1930
PFTOOL1528NOJAWS	PZ 1930 Tool Kit No Jaws
PFTOOL1528	PZ 1930 Tool Kit 15-35mm M Profile Jaws Kit
PFTOOL1528TH	PZ 1930 Tool Kit 16-32mm TH Profile Jaws Kit
PFTOOL1528U	PZ 1930 Tool Kit 16-32mm U Profile Jaws Kit
PFTOOL1528V	PZ 1930 Tool Kit 15-28mm V Profile Jaws Kit

- The PZ 1930 Tool Kits comes complete with a handy carry case and everything you need to press 15mm up to 35mm.
- 2 x batteries and charger.
- Suitable for use with copper, stainless steel, PEX and multilayer pipe and fittings
- Kits that include M, TH, U & V Profile Jaws available

2
YEARS
30000
CYCLES
PZ SERIES
BATTERY POWERED
PRESS TOOL

ONLY
2KGS
2~4s
PER CYCLE TIME



SPECIFICATIONS

Capacity:	12-28mm(1/2"-1") Stainless steel pipe, 12-35mm(1/2"-1") Copper pipe, 12-32mm PEX&Multi-layer pipe	Battery:	18V Li-ion 2.5Ah
Output:	19KN	Battery Charger:	AC 100-240V
Stroke:	30mm	Charging Time:	Approx. 50mins
Oil capacity:	Approx. 60ml	Service Interval:	Service Interval: 30000cycles
Crimping Cycle Time:	2-4S	Weight:	Approx.2.0kgs (tool with battery)
Crimping Cycles/charge:	180cycles (DN 20 Stainless Steel)		Approx. 3.5kgs(tool with battery and jaw)
		Tool Size:	Tool Size: 363x120x75mm

MODEL NO.	DESCRIPTION	Weight (KGS)	Standard Pack
PZ-1930	PZ-1930 Battery Press Tool Kit without jaws	6.10	1pc
ACCESSORIES	18V, 2.5 Ah Li-Ion Batteries	0.35	2pcs
	Charger	0.70	1pc
	Plastic case	2.90	1pc
	Sealing ring of cylinder:		1set
	Sealing ring of safety valve:		1set

Z-PRESS PZ-1930 Jaws and Accessories



M Profile Jaws

CODE	M PROFILE JAW PZ 1930
PFJAWM15 1930	M Profile Jaw 15mm
PFJAWM22 1930	M Profile Jaw 22mm
PFJAWM28 1930	M Profile Jaw 28mm
PFJAWM35 1930	M Profile Jaw 35mm



TH Profile Jaws

CODE	TH PROFILE JAW PZ 1930
PFJAWTH16 1930	TH Profile Jaw 16mm
PFJAWTH20 1930	TH Profile Jaw 20mm
PFJAWTH26 1930	TH Profile Jaw 26mm
PFJAWTH32 1930	TH Profile Jaw 32mm



U Profile Jaws

CODE	U PROFILE JAW PZ 1930
PFJAWU16 1930	U Profile Jaw 16mm
PFJAWU20 1930	U Profile Jaw 20mm
PFJAWU25 1930	U Profile Jaw 25mm
PFJAWU32 1930	U Profile Jaw 32mm



V Profile Jaws

CODE	V PROFILE JAW PZ 1930
PFJAWV15 1930	V Profile Jaw 15mm
PFJAWV22 1930	V Profile Jaw 22mm
PFJAWV28 1930	V Profile Jaw 28mm



Jaw Carry Case

CODE	JAW CARRY CASE
PFCASEZPR8JAW	Zpress Carry Case For R8

180 Degree Jaws

Available in M & U Profile



CODE	180° JAWS
PFJAW180ADAPTOR	180 °Jaw Adaptor for use with PZ-1930
PFJAWR8M15	15mm M Profile Ring Jaw 180°
PFJAWR8M22	22mm M Profile Ring Jaw 180°
PFJAWR8M28	28mm M Profile Ring Jaw 180°
PFJAWR8M35	35mm M Profile Ring Jaw 180°
PFJAWR8U16	16mm U Profile Ring Jaw 180°
PFJAWR8U20	20mm U Profile Ring Jaw 180°
PFJAWR8U25	25mm U Profile Ring Jaw 180°
PFJAWR8U32	32mm U Profile Ring Jaw 180°

Jaw Kits



CODE	JAWS KITS FOR PZ 1930
PFJAWSM152228	M Profile Jaw Kit 15mm 22mm 28mm
PFJAWSTH16/32	TH Profile Jaw Kit 16mm 20mm 26mm 32mm
PFJAWSU16/32	U Profile Jaw Kit 16mm 20mm 25mm 32mm
PFJAWSV152228	V Profile Jaw Kit 15mm 22mm 28mm

Z-PRESS

MP-1930

Battery Powerd Mechanical Press Tool



- The MP 1930 is the newest addition of press tool with mechanical system, it is the quickest and most efficient way to join metal and plastic pipe
- up to 35mm copper and stainless pipe
- up to 40mm Plastic pipe / multi layer composite
- 2 x batteries and charger.
- Kits that include M, TH, U & V Profile Jaws available



2
YEARS
20000
CYCLES
MP-1930
BATTERY POWERED MECHANICAL
PRESS TOOL

BL **2s**
MOTOR PER CYCLE TIME

CODE	PRESS TOOL KIT MP 1930
PFTOOLMP1930NOJA	MP 1930 Tool Kit No Jaws
PFTOOLMP1535	MP 1930 Tool Kit 15-35mm M Profile Jaws Kit
PFTOOLMP1632U	MP 1930 Tool Kit 16-32mm U Profile Jaws Kit

Specifications

Capacity:	up to 35mm Stainless steel pipe, Copper pipe	Battery:	18V Li-ion 2.0Ah
	up to 40mm Plastic pipe, Multi-layer composite pipe	Battery Charger:	AC 100V-240V 50-60Hz
Output:	19kN	Charging Time:	Approx. 40mins
Stroke:	30mm	Weight:	Approx. 2.4kgs (tool with battery)
Pressing Cycle Time:	2S	Tool Size:	400x119x76mm

Model No.	Description	Weight (KGS)	Standard Pack
MP-1930	MP-1930 Battery Press Tool Kit without jaws	4.9	1set
ACCESSORIES	18V, 2.0 Ah Li-Ion Batteries	0.3	2pcs
	Charger	0.5	1pc
	Plastic case	1.7	1pc

Z-PRESS MP-1930 Jaws and Accessories



U Profile Jaws

CODE	U PROFILE JAW MP 1930
PFJAWU16 1930	U Profile Jaw 16mm
PFJAWU20 1930	U Profile Jaw 20mm
PFJAWU25 1930	U Profile Jaw 25mm
PFJAWU32 1930	U Profile Jaw 32mm

M Profile Jaws

CODE	M PROFILE JAW MP 1930
PFJAWM15 1930	M Profile Jaw 15mm
PFJAWM22 1930	M Profile Jaw 22mm
PFJAWM28 1930	M Profile Jaw 28mm
PFJAWM35 1930	M Profile Jaw 35mm



V Profile Jaws

CODE	V PROFILE JAW MP 1930
PFJAWV15 1930	V Profile Jaw 15mm
PFJAWV22 1930	V Profile Jaw 22mm
PFJAWV28 1930	V Profile Jaw 28mm



TH Profile Jaws

CODE	TH PROFILE JAW MP 1930
PFJAWTH16 1930	TH Profile Jaw 16mm
PFJAWTH20 1930	TH Profile Jaw 20mm
PFJAWTH26 1930	TH Profile Jaw 26mm
PFJAWTH32 1930	TH Profile Jaw 32mm



Jaw Carry Case

CODE	JAW CARRY CASE
PFCASEZPR8JAW	Zpress Carry Case For R8

180 Degree Jaws

Available in M & U Profile



CODE	180° JAWS
PFJAW180ADAPTOR	180 °Jaw Adaptor for use with MP-1930
PFJAWR8M15	15mm M Profile Ring Jaw 180°
PFJAWR8M22	22mm M Profile Ring Jaw 180°
PFJAWR8M28	28mm M Profile Ring Jaw 180°
PFJAWR8M35	35mm M Profile Ring Jaw 180°
PFJAWR8U16	16mm U Profile Ring Jaw 180°
PFJAWR8U20	20mm U Profile Ring Jaw 180°
PFJAWR8U25	25mm U Profile Ring Jaw 180°
PFJAWR8U32	32mm U Profile Ring Jaw 180°

Jaw Kits



CODE	JAWS KITS FOR MP 1930
PFJAWSM152228	M Profile Jaw Kit 15mm 22mm 28mm
PFJAWSTH16/32	TH Profile Jaw Kit 16mm 20mm 26mm 32mm
PFJAWSU16/32	U Profile Jaw Kit 16mm 20mm 25mm 32mm
PFJAWSV152228	V Profile Jaw Kit 15mm 22mm 28mm

Z-PRESS

PZ-1550

Battery Powerd Mechanical Press Tool



- The PZ1550 Press Tool Kit comes complete with a carry case and everything you need to press 15mm up to 54mm in fitting size.
- 2 x batteries and charger
- Suitable for use with copper, stainless steel, PEX and multilayer pipe and fittings

CODE	TOOL KITS MP 1550
PFTOOL1554	PZ 1550 Tool Kit 15-54mm M Profile Jaws Kit
PFTOOL1554TH	PZ 1550 Tool Kit 15-54mm TH Profile Jaws Kit
PFTOOL1554U	PZ 1550 Tool Kit 15-54mm U Profile Jaws Kit

M-Profile Jaws



CODE	M PROFILE JAWS
PFJAWMADPT 1550	M Profile Jaw Adaptor for PZ1550
PFJAWM15 1550	M Profile Jaw 15mm
PFJAWM22 1550	M Profile Jaw 22mm
PFJAWM28 1550	M Profile Jaw 28mm
PFJAWM35 1550	M Profile Jaw 35mm
PFJAWM42 1550	M Profile Jaw 42mm
PFJAWM54 1550	M Profile Jaw 54mm
PFJAWSM15/54	M Profile Jaw Kit 7 Piece 15mm 22mm 28mm 35mm 42mm 54mm

Single Jaws for 1550



CODE	TH PROFILE JAWS 1550
PFJAWTH16 1550	TH Profile 16mm
PFJAWTH20 1550	TH Profile 20mm
PFJAWTH26 1550	TH Profile 26mm
PFJAWTH32 1550	TH Profile 32mm



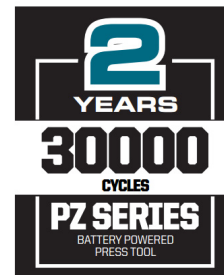
CODE	U PROFILE JAWS 1550
PFJAWU16 1550	U Profile 16mm
PFJAWU20 1550	U Profile 20mm
PFJAWU25 1550	U Profile 25mm
PFJAWU32 1550	U Profile 32mm

SPECIFICATIONS

Capacity:	12-54mm(1/2"-2") for stainless steel pipe	Battery:	18V Li-ion 4.0Ah
	12-108mm(1/2"-4") for PEX,Multi-layer and copper pipe	Battery Charger:	AC 100-240V
Output:	32KN	Charging Time:	Approx. 80mins
Stroke:	40mm	Service Interval:	30000cycles
Cycle Time:	Approx. 3-4.5 seconds	Weight:	Approx.3.9kgs (tool with battery)
Oil capacity:	115ml		Approx.6.1kgs(tool with battery and jaw)
		Tool Size:	450x81x128mm

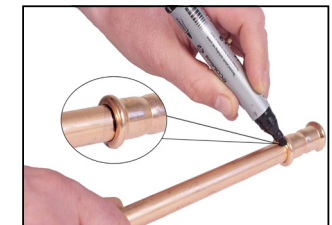
PZ-1550 Battery Press Tool Kit

MODEL NO.	DESCRIPTION	Weight(kgs)
PZ-1550	PZ-1550 Battery Press Tool Kit without jaws	9.20
	Battery, 18V, 4.0Ah Li-Ion	0.60
ACCESSORRIES	Charger	0.70
	Plastic case	4.10



3~4.5s
PER CYCLE TIME

Don't Miss



Our installation instructions on page 10

novopress

ACO103



- The ACO103 Tool Kits come complete with a handy carry case and everything you need to press 15mm up to 35mm in copper and stainless steel. Up to 40mm in Plastic.
- 2 x powerful Milwaukee lithium-Ion batteries and charger.
- Rotatable Head
- Illumination of the press area
- One Hand Operation
- Kits that include M, U & V Profile Jaws available



CODE	NOVOPRESS ACO103 TOOL KITS
PFTOOLACO103	ACO103 Tool Only *No Case or accessories*
PFTOOLACO103NOJA	ACO103 Tool C/W Case, 2xBatt, Charger *No Jaws*
PFTOOLACO1033M	ACO103 Tool 15-28mm M Jaws Kit C/W Case 2xBatt, Charger
PFTOOLACO1034M	ACO103 Tool 15-35mm M Jaws Kit C/W Case 2xBatt, Charger
PFTOOLACO1034U	ACO103 Tool 16-32mm U Jaws Kit C/W Case 2xBatt, Charger
PFTOOLACO1034V	ACO103 Tool 15-35mm V Jaws Kit C/W Case 2xBatt, Charger

Technical Data ACO103

Dimensions ² :	Metal pipe up to 35 mm / Plastic pipe up to 40 mm
Weight without battery:	1.6 kg
Length:	320 mm
Width:	98 mm
Height:	72 mm
Power consumption:	240 W
Piston force:	19 kN
Piston stroke:	30 mm
Battery:	Milwaukee® M12™ battery system ³
Battery capacity ⁴ :	up to 250 pressing cycles
Charging time ⁵ :	45 - 75 Min.

Novopress ACO103 Jaws & Accessories

novopress

ACO103 Jaws



M Profile Jaws

CODE	M PROFILE JAWS FOR USE WITH ACO103
PFJAWNOVOM15PB1	15mm M Profile PB1 Jaw ACO103
PFJAWNOVOM22PB1	22mm M Profile PB1 Jaw ACO103
PFJAWNOVOM28PB1	28mm M Profile PB1 Jaw ACO103
PFJAWNOVOM35PB1	35mm M Profile PB1 Jaw ACO103



U Profile Jaws

CODE	U PROFILE JAWS FOR USE WITH ACO103
PFJAWNOVOU16PB1	16mm U Profile PB1 Jaw ACO103
PFJAWNOVOU20PB1	20mm U Profile PB1 Jaw ACO103
PFJAWNOVOU25PB1	25mm U Profile PB1 Jaw ACO103
PFJAWNOVOU32PB1	32mm U Profile PB1 Jaw ACO103
PFJAWNOVOU40PB1	40mm U Profile PB1 Jaw ACO103



V Profile Jaws

CODE	V PROFILE JAWS FOR USE WITH ACO103
PFJAWNOVOV15PB1	15mm V Profile PB1 Jaw ACO103
PFJAWNOVOV22PB1	22mm V Profile PB1 Jaw ACO103
PFJAWNOVOV28PB1	28mm V Profile PB1 Jaw ACO103
PFJAWNOVOV35PB1	35mm V Profile PB1 Jaw ACO103



Maxipro Jaws

CODE	MAXIPRO PB1 ACR BMP JAWS
PFJAWNOVOBMP1/4	1/4" PB1 ACR BMP Jaw ACO103
PFJAWNOVOBMP3/8	3/8" PB1 ACR BMP Jaw ACO103
PFJAWNOVOBMP1/2	1/2" PB1 ACR BMP Jaw ACO103
PFJAWNOVOBMP5/8	5/8" PB1 ACR BMP Jaw ACO103
PFJAWNOVOBMP3/4	3/4" PB1 ACR BMP Jaw ACO103
PFJAWNOVOBMP7/8	7/8" PB1 ACR BMP Jaw ACO103
PFJAWNOVOBMP11/8	1.1/8" PB1 ACR BMP Jaw ACO103



M Profile Angled Jaw Set

CODE	M PROFILE ANGLE JAW SET USE WITH ACO103
PFJAWNOVOMA1522	15mm & 22mm Angled Jaw Set ACO103

Angled Jaws



Adaptor Jaw

CODE	ADAPTOR JAW FOR USE WITH ACO103
PFJAWNOVOSZB101	Adaptor Jaw for use with ACO103



M Profile Angled Jaw

CODE	M PROFILE ANGLE JAW USE WITH ACO103
PFJAWNOVOMA15	15mm M Profile Angled Jaw ACO103
PFJAWNOVOMA22	22mm M Profile Angled Jaw ACO103
PFJAWNOVOMA28	28mm M Profile Angled Jaw ACO103
PFJAWNOVOMA35	35mm M Profile Angled Jaw ACO103



V Profile Angled Jaw

CODE	V PROFILE ANGLE JAW USE WITH ACO103
PFJAWNOVOVA15	15mm V Profile Angled Jaw ACO103
PFJAWNOVOVA22	22mm V Profile Angled Jaw ACO103
PFJAWNOVOVA28	28mm V Profile Angled Jaw ACO103
PFJAWNOVOVA35	35mm V Profile Angled Jaw ACO103

novopress

ACO203



CODE	NOVOPRESS ACO203 TOOL KITS
PFTOOLACO203	ACO203 Tool Only *No Case or accessories*
PFTOOLACO2034M	ACO203 Tool 15-35mm M Jaws Kit C/W Case 2xBatt, Charger
PFCASENOVO	Novopress carry case for 42mm, 54mm, ZB203

- The ACO203 Tool Kits come complete with a handy carry case and everything you need to press
- 15mm - 54mm (M contour) copper and stainless steel
- 15mm - 108mm (V contour) copper and stainless steel
- 15mm- 110mm in Plastic.
- 2 x powerful Milwaukee lithium-Ion batteries and charger.
- Illumination of the press area
- One Hand Operation
- Low Weight
- Kits that include M, U & V Profile Jaws available



Technical Data ACO203

Dimensions:	Metal pipe up to 54 mm (M-Contour), resp. up to 108 mm (V-Contour) / Plastic pipe up to 110 mm
Weight without battery:	2.3 kg
Length:	387 mm
Width:	75 mm
Height:	111 mm
Power consumption:	450 W
Piston force:	32 kN
Piston stroke:	40 mm
Battery:	Milwaukee® M18™ battery system ¹
Battery capacity ² :	up to 250 press cycles
Charging time ³ :	approx. 45 - 75 min.

1) all Milwaukee® capacities in the market can be used
2) depending on material, dimension and battery capacity
3) depending on battery capacity

novopress

ACO203 Jaws



M Profile Jaws

CODE	M PROFILE JAWS FOR USE WITH ACO203
PFJAWNOVOM15PB2	15mm M Profile PB2 Jaw ACO203
PFJAWNOVOM22PB2	22mm M Profile PB2 Jaw ACO203
PFJAWNOVOM28PB2	28mm M Profile PB2 Jaw ACO203
PFJAWNOVOM35PB2	35mm M Profile PB2 Jaw ACO203



V Profile Jaws

CODE	V PROFILE JAWS FOR USE WITH ACO203
PFJAWNOVOV15PB2	15mm V Profile PB2 Jaw ACO203
PFJAWNOVOV22PB2	22mm V Profile PB2 Jaw ACO203
PFJAWNOVOV28PB2	28mm V Profile PB2 Jaw ACO203
PFJAWNOVOV35PB2	35mm V Profile PB2 Jaw ACO203
PFJAWNOVOV42PB2	42mm V Profile PB2 Jaw ACO203
PFJAWNOVOV54PB2	54mm V Profile PB2 Jaw ACO203



CODE	M PROFILE SLING JAWS FOR USE WITH ACO203
PFJAWNOVOMS42PB2	42mm M Profile PB2 Sling Jaw ACO203
PFJAWNOVOMS54PB2	54mm M Profile PB2 Sling Jaw ACO203



CODE	V PROFILE SLING JAWS FOR USE WITH ACO203
PFJAWNOVOVS42	42mm V Profile PB2 Sling Jaw ACO203
PFJAWNOVOVS54	54mm V Profile PB2 Sling Jaw ACO203

Jaw Adaptors



Adaptor Jaw

CODE	ADAPTOR JAW FOR USE WITH ACO203
PFJAWNOVOSZB201	Adaptor Jaw for use with ACO203
PFJAWNOVOZB203	Adaptor Jaw PB2 for use with 54mm & 42mm Jaws

Angled Jaws



M Profile Angled Jaw

CODE	M PROFILE ANGLE JAW USE WITH ACO103
PFJAWNOVOMA15	15mm M Profile Angled Jaw ACO203
PFJAWNOVOMA22	22mm M Profile Angled Jaw ACO203
PFJAWNOVOMA28	28mm M Profile Angled Jaw ACO203
PFJAWNOVOMA35	35mm M Profile Angled Jaw ACO203



V Profile Angled Jaw

CODE	V PROFILE ANGLE JAW USE WITH ACO103
PFJAWNOVOVA15	15mm V Profile Angled Jaw ACO103
PFJAWNOVOVA22	22mm V Profile Angled Jaw ACO103
PFJAWNOVOVA28	28mm V Profile Angled Jaw ACO103
PFJAWNOVOVA35	35mm V Profile Angled Jaw ACO103

Copper Tube to BS EN1057

COPPER TUBE TO BS EN1057 R250 / R290 (TABLE X)

SIZE OD X WT	LENGTHS	TEMPER	PLAIN	CHROME	YELLOW PVC
15mm x 0.7mm	2m	HALF HARD	Y	Y	
15mm x 0.7mm	3m	HALF HARD	Y	Y	Y
15mm x 0.7mm	6m	HALF HARD	Y		Y
22mm x 0.9mm	2m	HALF HARD	Y	Y	
22mm x 0.9mm	3m	HALF HARD	Y	Y	Y
22mm x 0.9mm	6m	HALF HARD	Y		Y
28mm x 0.9mm	3m	HALF HARD	Y	Y	Y
28mm x 0.9mm	6m	HALF HARD	Y		Y
35mm x 1.2mm	3m	HALF HARD	Y	Y	
35mm x 1.2mm	6m	HALF HARD	Y		
42mm x 1.2mm	3m	HALF HARD	Y	Y	
42mm x 1.2mm	6m	HALF HARD	Y		
54mm x 1.2mm	3m	HARD	Y	Y	
54mm x 1.2mm	6m	HARD	Y		
67mm x 1.2mm	3m	HARD	Y		
67mm x 1.2mm	6m	HARD	Y		
76mm x 1.5mm	3m	HARD	Y		
76mm x 1.5mm	6m	HARD	Y		
108mm x 1.5mm	3m	HARD	Y		
108mm x 1.5mm	6m	HARD	Y		
133mm x 1.5mm	3m	HARD	Y		
133mm x 1.5mm	6m	HARD	Y		
159mm x 2mm	3m	HARD	Y		
159mm x 2mm	6m	HARD	Y		

COPPER TUBE TO BS EN1057 R290 (LITEX)

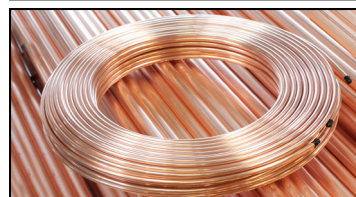
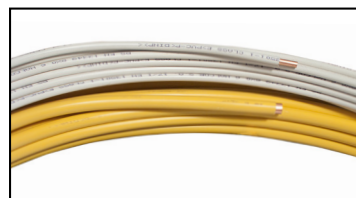
SIZE OD X WT	2M	3M	6M	TEMPER
35mm x 1mm		Y		HARD
42mm x 1mm		Y		HARD
54mm x 1.2mm		Y		HARD

COPPER TUBE TO BS EN1057 R250 / R290 (TABLE Y)

SIZE OD X WT	LENGTHS	TEMPER	PLAIN	CHROME	YELLOW PVC
15mm x 1mm	5.8	HALF HARD	Y		
22mm x 1.2mm	5.8	HALF HARD	Y		
28mm x 1.2mm	5.8	HALF HARD	Y		
35mm x 1.5mm	5.8	HARD	Y		
42mm x 1.5mm	5.8	HARD	Y		
54mm x 2mm	5.8	HARD	Y		
67mm x 2mm	5.8	HARD	Y		
76mm x 2mm	5.8	HARD	Y		
108mm x 2.5mm	5.8	HARD	Y		

PLAIN AND PVC COVER COILS TO BS EN1057 R220 (TABLE W & Y)

SIZE OD X WT	PLAIN	WHITE	YELLOW
8mm x 0.6mm x 10m	Y		
8mm x 0.6mm x 25m	Y	Y	
10mm x 0.7mm x 10m	Y	Y	
10mm x 0.7mm x 25m	Y	Y	
10mm x 0.7mm x 50m	Y	Y	
15mm x 1mm x 20m			Y
15mm x 1mm x 25m		Y	
22mm x 1.2mm x 20m			Y
28mm x 1.2mm x 20m			Y



Elbows



90 Degree

CODE	90 DEGREE ELBOW	BOX	BAG
EFEL08	8mm x 90°	4000	25
EFEL10	10mm x 90°	3500	25
EFEL15	15mm x 90°	1200	25
EFEL22	22mm x 90°	400	25
EFEL28	28mm x 90°	200	20
EFEL35	35mm x 90°	100	5
EFEL42	42mm x 90°	60	5
EFEL54	54mm x 90°	36	2
EFEL67	67mm x 90°	20	1
EFEL76	76mm x 90°	12	1



45 Degree

CODE	45 DEGREE ELBOW	BOX	BAG
EFEL1045	10mm x 45°	2500	50
EFEL1545	15mm x 45°	1200	25
EFEL2245	22mm x 45°	500	25
EFEL2845	28mm x 45°	200	20
EFEL3545	35mm x 45°	100	5
EFEL4245	42mm x 45°	60	5
EFEL5445	54mm x 45°	36	2
EFEL6745	67mm x 45°	20	1
EFEL7645	76mm x 45°	12	1



90 Degree Street

CODE	90 DEGREE STREET ELBOW	BOX	BAG
EFELS15	15mm x 90°	1200	25
EFELS22	22mm x 90°	400	25
EFELS28	28mm x 90°	200	20
EFELS35	35mm x 90°	100	10
EFELS42	42mm x 90°	60	5
EFELS54	54mm x 90°	30	2



45 Degree Street

CODE	45 DEGREE STREET ELBOW	BOX	BAG
EFELS1545	15mm x 45°	1250	25
EFELS2245	22mm x 45°	500	25
EFELS2845	28mm x 45°	200	25
EFELS3545	35mm x 45°	100	10
EFELS4245	42mm x 45°	60	5
EFELS5445	54mm x 45°	36	2



Female & Male Iron

CODE	FEMALE & MALE IRON ELBOW	BOX	BAG
EFEL15FI	Female 15mm x 1/2"	600	10
EFEL22FI	Female 22mm x 3/4"	500	10
EFEL28FI	Female 28mm x 1"	350	10
EFEL15MI	Male 15mm x 1/2"	650	25
EFEL22MI	Male 22mm x 3/4"	325	25
EFEL28MI	Male 28mm x 1"	350	10



90 Degree Long Radius

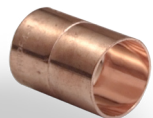
CODE	90 DEGREE ELBOW LONG RADIUS	BOX	BAG
EFELSLR15	15mm x 90° Street	1000	25
EFELSLR22	22mm x 90° Street	400	25
EFELLR15	15mm x 90°	1000	25



Long Tail Street

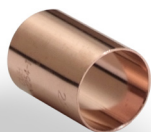
CODE	90 DEGREE LONG TAIL ELBOW	BOX	BAG
EFELSLT15	15mm x 90° Long Tail (35mm)	500	25
EFELSLT22	22mm x 90° Long Tail (56mm)	100	10

Couplers



Coupler

CODE	COUPLER	BOX	BAG
EFCO08	8mm	4500	50
EFCO10	10mm	4000	25
EFCO15	15mm	2000	25
EFCO22	22mm	700	25
EFCO28	28mm	300	20
EFCO35	35mm	150	5
EFCO42	42mm	100	5
EFCO54	54mm	60	5
EFCO67	67mm	35	1
EFCO76	76mm	20	1



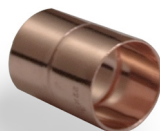
Slip Coupler

CODE	SLIP COUPLER	BOX	BAG
EFSC15	15mm	2000	25
EFSC22	22mm	625	25
EFSC28	28mm	340	20
EFSC35	35mm	200	20
EFSC42	42mm	100	10
EFSC54	54mm	60	5



Reducing Coupler CxC

CODE	REDUCING COUPLER	BOX	BAG
EFCO1008	10mm x 8mm	4000	50
EFCO1508	15mm x 8mm	1500	50
EFCO1510	15mm x 10mm	1500	50
EFCO1512	15mm x 12mm	1500	50
EFCO2215	22mm x 15mm	1000	25
EFCO2815	28mm x 15mm	500	25
EFCO2822	28mm x 22mm	500	25
EFCO3515	35mm x 15mm	250	25
EFCO3522	35mm x 22mm	250	25
EFCO3528	35mm x 28mm	250	25
EFCO4222	42mm x 22mm	150	25
EFCO4228	42mm x 28mm	150	25
EFCO4235	42mm x 35mm	150	25
EFCO5435	54mm x 35mm	75	25
EFCO5442	54mm x 42mm	75	25



Imperial/Metric Coupler

CODE	IMPERIAL/METRIC COUPLER	BOX	BAG
EFCOI15	15mm x 1/2"	2000	25
EFCOI22	22mm x 3/4"	700	25
EFCOI28	28mm x 1"	250	25



Male Iron Coupler

CODE	MALE IRON COUPLER	BOX	BAG
EFCO151/4MI	15mm x 1/4"	100	10
EFCO15MI	15mm x 1/2"	1250	10
EFCO22MI	22mm x 3/4"	500	10
EFCO28MI	28mm x 1"	350	10
EFCO3511/4MI	35mm x 1 1/4"	200	1
EFCO4211/2MI	42mm x 1 1/2"	120	1
EFCO542MI	54mm x 2"	80	1
EFCO6721/2MI	67mm x 2 1/2"	48	1



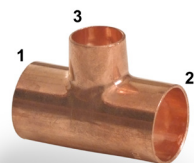
Female Iron Coupler

CODE	FEMALE IRON COUPLER	BOX	BAG
EFCO151/4FI	15mm x 1/4"	100	10
EFCO15FI	15mm x 1/2"	1000	10
EFCO22FI	22mm x 3/4"	450	10
EFCO28FI	28mm x 1"	250	10
EFCO3511/4FI	35mm x 1 1/4"	150	1
EFCO4211/2FI	42mm x 1 1/2"	90	1
EFCO542FI	54mm x 2"	70	1



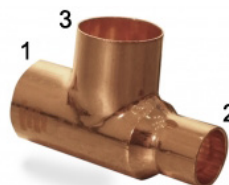
Click Flix Coupler

CODE	CLICK FLIX REPAIR COUPLER	BOX	BAG
CLICKFIX	Click fix 15mm	100	1



Branch Reducing Tee

CODE	REDUCING TEE	BOX	BAG
EFTE15158	15mm x 15mm x 8mm	800	25
EFTE151510	15mm x 15mm x 10mm	400	25
EFTE222215	22mm x 22mm x 15mm	300	25
EFTE282815	28mm x 28mm x 15mm	150	10
EFTE282822	28mm x 28mm x 22mm	120	10
EFTE353515	35mm x 35mm x 15mm	100	25
EFTE353522	35mm x 35mm x 22mm	80	5
EFTE353528	35mm x 35mm x 28mm	80	5
EFTE424215	42mm x 42mm x 15mm	40	2
EFTE424222	42mm x 42mm x 22mm	40	2
EFTE424228	42mm x 42mm x 28mm	40	2
EFTE424235	42mm x 42mm x 35mm	40	5
EFTE545415	54mm x 54mm x 15mm	30	5
EFTE545422	54mm x 54mm x 22mm	30	5
EFTE545428	54mm x 54mm x 28mm	30	5
EFTE545435	54mm x 54mm x 35mm	30	5
EFTE545442	54mm x 54mm x 42mm	25	5
EFTE676742	67mm x 67mm x 42mm	10	1
EFTE676754	67mm x 67mm x 54mm	10	1
EFTE676735	76mm x 76mm x 35mm	7	1
EFTE676742	76mm x 76mm x 42mm	7	1
EFTE676767	76mm x 76mm x 67mm	7	1
EFTE10810867	108mm x 108mm x 67mm	4	1



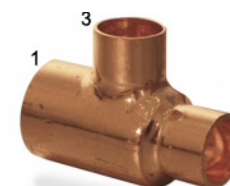
One End Reducing Tee

CODE	REDUCING TEE	BOX	BAG
EFTE151015	15mm x 10mm x 15mm	800	25
EFTE221522	22mm x 15mm x 22mm	250	25
EFTE281528	28mm x 15mm x 28mm	150	25
EFTE282228	28mm x 22mm x 28mm	120	20
EFTE351535	35mm x 15mm x 35mm	100	25
EFTE352235	35mm x 22mm x 35mm	75	25
EFTE352835	35mm x 28mm x 35mm	80	5
EFTE421542	42mm x 15mm x 42mm	40	5
EFTE422242	42mm x 22mm x 42mm	50	5



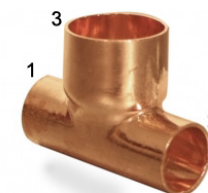
Equal Tee

CODE	EQUAL TEE	BOX	BAG
EFTE08	8mm	2000	50
EFTE10	10mm	1500	50
EFTE15	15mm	800	25
EFTE22	22mm	300	25
EFTE28	28mm	120	10
EFTE35	35mm	70	5
EFTE42	42mm	50	5
EFTE54	54mm	20	1
EFTE67	67mm	12	1
EFTE76	76mm	8	1
EFTE108	108mm	3	1



Two Branch and one end Reducing Tee

CODE	REDUCING TEE	BOX	BAG
EFTE221515	22mm x 15mm x 15mm	300	25
EFTE281515	28mm x 15mm x 15mm	150	25
EFTE281522	28mm x 15mm x 22mm	150	25
EFTE282215	28mm x 22mm x 15mm	150	25
EFTE282222	28mm x 22mm x 22mm	150	25
EFTE352215	35mm x 22mm x 15mm	100	25
EFTE352222	35mm x 22mm x 22mm	100	25
EFTE352822	35mm x 28mm x 22mm	100	5
EFTE352828	35mm x 28mm x 28mm	75	5
EFTE422828	42mm x 28mm x 28mm	50	5
EFTE423528	42mm x 35mm x 28mm	50	5
EFTE423535	42mm x 35mm x 35mm	50	5
EFTE544242	54mm x 42mm x 42mm	30	1



Both Ends Reducing Tee

CODE	REDUCING TEE	BOX	BAG
EFTE101015	10mm x 10mm x 15mm	800	25
EFTE151522	15mm x 15mm x 22mm	400	25
EFTE222228	22mm x 22mm x 28mm	120	10

Trade Pack



PACK 3:
 -EFC015 x 50
 -EFEL15 x 75
 -EFTE15 x 25
 -EFCO22 x 25
 -EFEL22 x 25

PACK 4:
 -EFC015 x 50
 -EFEL15 x 75
 -EFTE15 x 25
 -EFCO22 x 25
 -EFEL22 x 25
 -EFTE22 x 10

CODE	TRADE PACK	BOX	BAG
EFPACK03	Trade Pack 200	4	1
EFPACK04	Trade Pack 210	4	1



Female Iron End Reducing Tee

CODE	FEMALE IRON REDUCING TEE	BOX	BAG
EFTE151/2FI15	15mm x 1/2" x 15mm	500	25
EFTE221/222FI	22mm x 1/2" x 22mm	300	25
EFTE223/422FI	22mm x 3/4" x 22mm	200	25



Female Iron Branch Reducing Tee

CODE	FEMALE IRON BRANCH RED TEE	BOX	BAG
EFTE15151/2FI	15mm x 15mm x 1/2"	500	25
EFTE22221/2FI	22mm x 22mm x 1/2"	300	25
EFTE22223/4FI	22mm x 22mm x 3/4"	200	25
EFTE28281/2FI	28mm x 28mm x 1/2"	130	5
EFTE28281FI	28mm x 28mm x 1"	100	10



End Cap

CODE	END CAP	BOX	BAG
EFEC08	8mm	3500	50
EFEC10	10mm	3500	50
EFEC15	15mm	2000	25
EFEC22	22mm	800	25
EFEC28	28mm	500	25
EFEC35	35mm	200	20
EFEC42	42mm	150	10
EFEC54	54mm	80	10
EFEC67	67mm	50	10
EFEC76	76mm	30	10

BSP Wall Plate



CODE	WALL PLATE ELBOW	BOX	BAG
EFELWP15	15mm x 1/2" Wall Plate Elbow	400	10
GFELWP12	15mm x 1/2" Bsp Angled Wall Connector	100	10
GFCOWP15	15mm x 1/2" Bsp Straight Wall Plate	100	25

Cross Over



CODE	CROSS OVER	BOX	BAG
EFFCO15	15mm Full	400	10
EFFCO22	22mm Full	100	10
EFPCO15	15mm Part	400	10
EFPCO22	22mm Part	100	10

Solder



CODE	SOLDER	BAG
SOLDER-LEADED500	500gm Reel 3.25mm Leaded	20
SOLDER-LEADFREE500	500gm Reel 3.25mm Lead Free	20



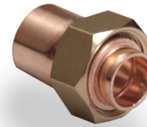
**Fitting Reducer
(FTG x C)**

CODE	FITTING REDUCER	BOX	BAG
EFRE108	10mm x 8mm	3500	50
EFRE158	15mm x 8mm	1500	50
EFRE1510	15mm x 10mm	1500	25
EFRE1512	15mm x 12mm	1000	25
EFRE2215	22mm x 15mm	1000	25
EFRE2815	28mm x 15mm	500	25
EFRE2822	28mm x 22mm	500	25
EFRE3515	35mm x 15mm	250	25
EFRE3522	35mm x 22mm	250	25
EFRE3528	35mm x 28mm	250	25
EFRE4215	42mm x 15mm	150	25
EFRE4222	42mm x 22mm	150	25
EFRE4228	42mm x 28mm	150	25
EFRE4235	42mm x 35mm	200	10
EFRE5415	54mm x 15mm	100	10
EFRE5422	54mm x 22mm	100	10
EFRE5428	54mm x 28mm	100	10
EFRE5435	54mm x 35mm	100	10
EFRE5442	54mm x 42mm	100	10
EFRE6728	67mm x 28mm	50	5
EFRE6735	67mm x 35mm	50	5
EFRE6742	67mm x 42mm	50	5
EFRE7654	76mm x 54mm	25	1
EFRE7667	76mm x 67mm	20	1



**Long Tail Reducer
(FTG x C)**

CODE	LONG TAIL REDUCER	BOX	BAG
EFRELT1508	15mm x 8mm	1000	25
EFRELT1510	15mm x 10mm	1000	25



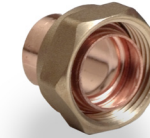
Straight Tap Connector

CODE	STRAIGHT TAP	BOX	BAG
EFSTC151/2	15mm x 1/2"	500	25
EFSTC153/4	15mm x 3/4"	500	25
EFSTC223/4	22mm x 3/4"	350	25
EFSTC281	28mm x 1"	250	10



Bent Tap Connector

CODE	BENT TAP	BOX	BAG
EFBTC151/2	15mm x 1/2"	450	25
EFBTC153/4	15mm x 3/4"	500	25
EFBTC223/4	22mm x 3/4"	50	25



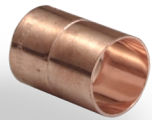
Straight Cylinder Union

CODE	STRAIGHT CYLINDER UNION	BOX	BAG
EFSCU221	22mm x 1" Straight	300	10
EFSCU281	28mm x 1" Straight	100	10



Bent Cylinder Union

CODE	BENT CYLINDER UNION	BOX	BAG
EFBCU22	22mm x 1"	100	10



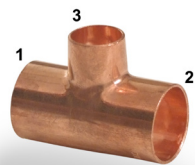
Coupler

CODE	COUPLER	BOX	BAG
XEFCO15	TradeX End Feed 15mm Coupling	1300	325
XEFCO22	TradeX End Feed 22mm Coupling	600	150
XEFCO28	TradeX End Feed 28mm Coupling	300	75



Equal Tee

CODE	EQUAL TEE	BOX	BAG
XEFTE15	TradeX End Feed 15mm Equal Tee	800	200
XEFTE22	TradeX End Feed 22mm Equal Tee	200	50
XEFTE28	TradeX End Feed 28mm Equal Tee	100	30



Reducing Tee

CODE	REDUCING TEE	BOX	BAG
XEFTE221522	TradeX End Feed 22mm x 15mm x 22mm Reducing Tee	300	75
XEFTE222215	TradeX End Feed 22mm x 22mm x 15mm Reducing Tee	300	75



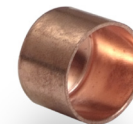
90 Degree

CODE	90 DEGREE ELBOW	BOX	BAG
XEFEL15	TradeX End Feed 15mm x 90° Elbow	1000	250
XEFEL22	TradeX End Feed 22mm x 90° Elbow	300	75
XEFEL28	TradeX End Feed 28mm x 90° Elbow	200	50



90 Degree Street

CODE	90 DEGREE STREET ELBOW	BOX	BAG
XEFELS15	TradeX End Feed 15mm x 90° Street Elbow	1000	250
XEFELS22	TradeX End Feed 22mm x 90° Street Elbow	300	75
XEFELS28	TradeX End Feed 28mm x 90° Street Elbow	100	25



End Cap

CODE	END CAP	BOX	BAG
XEFEC15	TradeX End Feed 15mm End Cap	650	25
XEFEC22	TradeX End Feed 22mm End Cap	250	25



Fitting Reducer

CODE	FITTING REDUCER	BOX	BAG
XEFRE1510	TradeX End Feed 15mm x 10mm Fitting Reducer	500	25
XEFRE2215	TradeX End Feed 22mm x 15mm Fitting Reducer	700	175
XEFRE2822	TradeX End Feed 28mm x 22mm Fitting Reducer	400	100

Elbows



90 Degree

CODE	90 DEGREE ELBOW	BOX	BAG
COEL08	8mm x 90°	350	10
COEL10	10mm x 90°	350	10
COEL15	15mm x 90°	200	10
COEL22	22mm x 90°	100	10
COEL28	28mm x 90°	50	5
COEL35	35mm x 90°	30	1
COEL42	42mm x 90°	20	1
COEL54	54mm x 90°	10	1
COEL2215	22mm x 15mm 90°	100	10



Male Iron

CODE	MALE IRON ELBOW	BOX	BAG
COEL081/4MI	8mm x 1/4"	500	10
COEL101/4MI	10mm x 1/4"	250	10
COEL103/8MI	10mm x 3/8"	150	10
COEL101/2MI	10mm x 1/2"	150	10
COEL151/4MI	15mm x 1/4"	200	10
COEL153/8MI	15mm x 3/8"	200	10
COEL151/2MI	15mm x 1/2"	200	10
COEL153/4MI	15mm x 3/4"	150	10
COEL221/2MI	22mm x 1/2"	100	10
COEL223/4MI	22mm x 3/4"	100	10
COEL221FI	22mm x 1"	70	10
COEL281MI	28mm x 1"	60	5
COEL3511/4MI	35mm x 1 1/4"	20	5
COEL4211/2MI	42mm x 1 1/2"	18	2
COEL542MI	54mm x 2"	10	2



Female Iron

CODE	FEMALE IRON ELBOW	BOX	BAG
COEL081/4FI	8mm x 1/4"	200	10
COEL101/4FI	10mm x 1/4"	200	10
COEL103/8FI	10mm x 3/8"	200	10
COEL101/2FI	10mm x 1/2"	200	10
COEL153/8FI	15mm x 3/8"	150	10
COEL151/2FI	15mm x 1/2"	150	10
COEL153/4FI	15mm x 3/4"	150	10
COEL221/2FI	22mm x 1/2"	100	10
COEL223/4FI	22mm x 3/4"	100	10
COEL221FI	22mm x 1"	60	5
COEL281FI	28mm x 1"	60	5
COEL3511/4FI	35mm x 1 1/4"	30	5
COEL4211/2FI	42mm x 1 1/2"	20	1
COEL542FI	54mm x 2"	12	1



Wall Plate Elbow

CODE	WALL PLATE ELBOW	BOX	BAG
COELWP15	15mm x 1/2"	100	10
COELWP22	22mm x 3/4"	50	5



Male Iron Drain Off

CODE	DRAIN OFF	BOX	BAG
COEL223/4MIDO	22mm x 3/4"	10	10

Couplers



Coupler

CODE	COUPLER	BAG	BOX
COCO06	6mm	500	50
COCO08	8mm	500	50
COCO10	10mm	400	10
COCO15	15mm	250	10
COCO22	22mm	150	10
COCO28	28mm	70	5
COCO35	35mm	45	1
COCO42	42mm	35	1
COCO54	54mm	15	1



Reducing Coupler

CODE	REDUCING COUPLER	BOX	BAG
COCO1008	10mm x 8mm	600	10
COCO1508	15mm x 8mm	250	10
COCO1510	15mm x 10mm	250	10
COCO1512	15mm x 12mm	200	10
COCO2215	22mm x 15mm	150	10
COCO2815	28mm x 15mm	120	5
COCO2822	28mm x 22mm	100	5



Female Iron

CODE	FEMALE IRON COUPLER	BOX	BAG
COCO061/4FI	6mm x 1/4"	500	10
COCO081/4FI	8mm x 1/4"	250	10
COCO083/8FI	8mm x 3/8"	250	10
COCO101/4FI	10mm x 1/4"	450	10
COCO103/8FI	10mm x 3/8"	250	10
COCO101/2FI	10mm x 1/2"	300	10
COCO151/4FI	15mm x 1/4"	300	10
COCO153/8FI	15mm x 3/8"	200	10
COCO151/2FI	15mm x 1/2"	200	10
COCO153/4FI	15mm x 3/4"	150	10
COCO221/2FI	22mm x 1/2"	150	10
COCO223/4FI	22mm x 3/4"	150	10
COCO221FI	22mm x 1"	100	10
COCO283/4FI	28mm x 3/4"	80	5
COCO281FI	28mm x 1"	80	5
COCO3511/4FI	35mm x 1 1/4"	40	1
COCO4211/2FI	42mm x 1 1/2"	35	1
COCO542FI	54mm x 2"	20	1



Male Iron

CODE	MALE IRON COUPLER	BOX	BAG
COCO061/4MI	6mm x 1/4"	500	50
COCO081/4MI	8mm x 1/4"	550	50
COCO083/8MI	8mm x 3/8"	250	10
COCO081/2MI	8mm x 1/2"	200	10
COCO101/4MI	10mm x 1/4"	500	10
COCO103/8MI	10mm x 3/8"	450	10
COCO101/2MI	10mm x 1/2"	350	10
COCO151/4MI	15mm x 1/4"	300	10
COCO153/8MI	15mm x 3/8"	300	10
COCO151/2MI	15mm x 1/2"	300	10
COCO153/4MI	15mm x 3/4"	200	10
COCO221/2MI	22mm x 1/2"	150	10
COCO223/4MI	22mm x 3/4"	150	10
COCO221MI	22mm x 1"	100	10
COCO283/4MI	28mm x 3/4"	100	10
COCO281MI	28mm x 1"	80	5
COCO3511/4MI	35mm x 1 1/4"	50	5
COCO4211/2MI	42mm x 1 1/2"	35	1
COCO542MI	54mm x 2"	25	1



Repair Coupler

CODE	REPAIR COUPLER	BAG	BOX
CORC15	15mm	100	10
CORC22	22mm	60	5

Tees



Equal Tee

CODE	EQUAL TEE	BOX	BAG
COTE08	8mm	200	10
COTE10	10mm	200	10
COTE15	15mm	100	10
COTE22	22mm	70	5
COTE28	28mm	30	5
COTE35	35mm	20	1
COTE42	42mm	15	1
COTE54	54mm	7	1



Female Iron

CODE	FEMALE IRON TEE	BOX	BAG
COTE15151/2FI	15mm x 15mm x 1/2"	100	5
COTE22221/2FI	22mm x 22mm x 1/2"	80	5
COTE22223/4FI	22mm x 22mm x 3/4"	60	5
COTE28281/2FI	28mm x 28mm x 1/2"	40	5



Reducing

CODE	REDUCING TEE	BOX	BAG
COTE151522	15mm x 15mm x 22mm	80	5
COTE221515	22mm x 15mm x 15mm	90	5
COTE221522	22mm x 15mm x 22mm	60	5
COTE222215	22mm x 22mm x 15mm	60	5
COTE222815	22mm x 28mm x 15mm	50	5
COTE282222	28mm x 22mm x 22mm	50	5
COTE282815	28mm x 28mm x 15mm	40	5
COTE282822	28mm x 28mm x 22mm	30	5

Blanking Disc



Blanking Disc

CODE	BLANKING DISC	BOX	BAG
COBD15	15mm	2000	50
COBD22	22mm	800	50
COBD28	28mm	600	25

Nut



Compression Nut

CODE	COMPRESSION NUT	BOX	BAG
CONUTS15	15mm	700	100
CONUTS20	20mm	500	100
CONUTS22	22mm	500	100
CONUTS28	28mm	500	100

Olives



Brass Olive

CODE	BRASS OLIVE	BOX	BAG
COO3/4	Brass 3/4"	1500	10
COO08	Brass 8mm	10000	50
COO10	Brass 10mm	7000	50
COO15	Brass 15mm	2500	50
COO20	Brass 20mm	10	1
COO22	Brass 22mm	1500	50
COO28	Brass 28mm	800	50
COO35	Brass 35mm	350	50
COO42	Brass 42mm	300	50
COO54	Brass 54mm	150	50



Copper Olive

CODE	COPPER OLIVE	BOX	BAG
COOC3/4	Copper 3/4"	1500	100
COOC08	Copper 8mm	10000	50
COOC10	Copper 10mm	7000	50
COOC15	Copper 15mm	2500	100
COOC20	Copper 20mm	100	10
COOC22	Copper 22mm	1500	50
COOC25	Copper 25mm	100	10
COOC28	Copper 28mm	800	50
COOC35	Copper 35mm	350	10
COOC42	Copper 42mm	300	10
COOC54	Copper 54mm	150	10

Reducers



3 Part Reducing Set

CODE	REDUCING SET	BOX	BAG
CORS1008	10mm x 8mm	1500	10
CORS1508	15mm x 8mm	1000	10
CORS1510	15mm x 10mm	1000	10
CORS2215	22mm x 15mm	500	10
CORS2822	28mm x 22mm	250	10
CORS3515	35mm x 15mm	130	10
CORS3522	35mm x 22mm	130	10
CORS3528	35mm x 28mm	130	5
CORS4235	42mm x 35mm	100	5
CORS4228	42mm x 28mm	100	5
CORS5415	54mm x 15mm	10	10
CORS5422	54mm x 22mm	10	10
CORS5428	54mm x 28mm	60	5
CORS5435	54mm x 35mm	10	10
CORS5442	54mm x 42mm	10	10



Single Part Reducer

CODE	SINGLE PART REDUCER	BOX	BAG
COR1508	15mm x 8mm	1000	10
COR1510	15mm x 10mm	1000	10

Tap Connectors



Straight Tap

CODE	STRAIGHT TAP CONNECTOR	BOX	BAG
COSTC151/2	15mm x 1/2"	150	10
COSTC153/4	15mm x 3/4"	150	10
COSTC223/4	22mm x 3/4"	100	10



Bent Tap

CODE	BENT TAP CONNECTOR	BOX	BAG
COBTC151/2	15mm x 1/2"	200	10
COBTC223/4	22mm x 3/4"	100	10

End Cap



End Cap

CODE	END CAP	BOX	BAG
COEC08	8mm	800	10
COEC10	10mm	700	10
COEC15	15mm	400	10
COEC22	22mm	250	10
COEC28	28mm	100	10
COEC35	35mm	60	5
COEC42	42mm	45	1
COEC54	54mm	35	1

Tank Connectors



Tank Connector

CODE	TANK CONNECTOR	BOX	BAG
COTC15	15mm	150	10
COTC22	22mm	70	5
COTC28	28mm	60	5
COTC35	35mm	40	5
COTC54	54mm	20	1



Spare Washer for Tank Connector

CODE	WASHERS	BOX	BAG
SU093	15mm Washer	100	10
SU094	22mm Washer	100	10

Elbows

All chrome fittings are bright polished finished



Wall Plate Elbow

CODE	WALL PLATE ELBOW	BOX	BAG
CPELWP15	15mm x 1/2" Wall Plate	100	10



90° Elbow

CODE	90° ELBOW	BOX	BAG
CPEL15	15mm Elbow	150	10
CPEL22	22mm Elbow	100	10
CPEL28	28mm Elbow	50	5



Female Elbow

CODE	FEMALE ELBOW	BOX	BAG
CPEL151/2FI	15mm x 1/2" FI Elbow	100	10
CPEL223/4FI	22mm x 3/4" FI Elbow	80	10
CPEL221FI	22mm x 1" FI Elbow	60	10



Male Elbow

CODE	MALE ELBOW	BOX	BAG
CPEL151/2MI	15mm x 1/2" MI Elbow	150	10
CPEL223/4MI	22mm x 3/4" MI Elbow	90	10

Tees



Reducing Tee

CODE	REDUCING TEE	BOX	BAG
CPTTE151522	15mm x 15mm x 22mm Tee	70	10
CPTTE221515	22mm x 15mm x 15mm Tee	80	10
CPTTE222215	22mm x 22mm x 15mm Tee	60	10
CPTTE282815	28mm x 28mm x 15mm Tee	50	5



Equal Tee

CODE	EQUAL TEE	BOX	BAG
CPTTE15	15mm Tee	100	10
CPTTE22	22mm Tee	60	10

Couplers

All chrome fittings are bright polished finished



Male Coupler

CODE	MALE COUPLER	BOX	BAG
CPCO151/2MI	15mm x 1/2"	200	10
CPCO153/8MI	15mm x 3/8"	200	10
CPCO223/4MI	22mm x 3/4"	100	10



Female Coupler

CODE	FEMALE COUPLER	BOX	BAG
CPCO151/2FI	15mm x 1/2"	150	10
CPCO223/4FI	22mm x 3/4"	100	10



Coupler

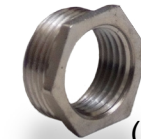
CODE	COMPRESSION COUPLER	BOX	BAG
CPCO15	15mm	150	10
CPCO22	22mm	100	10

End Cap



CODE	END CAP	BOX	BAG
CPEC15	15mm End Cap	400	10
CPEC22	22mm End Cap	100	10
CPEC1/2"	1/2" End Cap	100	50

Brass Bush



(Chrome Plated)

CODE	BRASS BUSH CHROME PLATED
BRBB3412CP	3/4" X 1/2" Brass Bush

Elbows



90 Degree

CODE	90 DEGREE ELBOW	BOX	BAG
SREL08	8mm x 90°	1500	25
SREL10	10mm x 90°	1500	25
SREL12	12mm x 90°	1500	25
SREL15	15mm x 90°	1000	25
SREL22	22mm x 90°	400	25
SREL28	28mm x 90°	200	10
SREL35	35mm x 90°	100	10
SREL42	42mm x 90°	60	2
SREL54	54mm x 90°	34	1



45 Degree

CODE	45 DEGREE ELBOW	BOX	BAG
SREL1545	15mm x 45°	1000	25
SREL2245	22mm x 45°	400	25
SREL2845	28mm x 45°	200	10
SREL3545	35mm x 45°	100	10
SREL5445	54mm x 45°	35	1



90° Street Elbow

CODE	90 DEGREE STREET ELBOW	BOX	BAG
SRELS15	15mm x 90°	1000	25
SRELS22	22mm x 90°	400	25
SRELS28	28mm x 90°	100	10

Fitting Reducer



Fitting Reducer

CODE	FITTING REDUCER	BOX	BAG
SRRE108	10mm x 8mm	2500	25
SRRE158	15mm x 8mm	2000	25
SRRE1510	15mm x 10mm	2000	25
SRRE1512	15mm x 12mm	2000	25
SRRE2215	22mm x 15mm	600	25
SRRE2815	28mm x 15mm	450	10
SRRE2822	28mm x 22mm	250	10
SRRE3522	35mm x 22mm	250	5
SRRE3528	35mm x 28mm	200	5
SRRE4215	42mm x 15mm	150	5
SRRE4222	42mm x 22mm	150	5
SRRE4228	42mm x 28mm	150	5
SRRE4235	42mm x 35mm	100	5
SRRE5415	54mm x 15mm	90	1
SRRE5422	54mm x 22mm	90	1
SRRE5428	54mm x 28mm	90	1
SRRE5435	54mm x 35mm	90	1
SRRE5442	54mm x 42mm	60	1

End Cap



End Cap

CODE	END CAP	BOX	BAG
SREC08	8mm	3500	50
SREC10	10mm	3500	50
SREC12	12mm	3000	50
SREC15	15mm	2000	50
SREC22	22mm	900	50
SREC28	28mm	500	25
SREC35	35mm	200	10
SREC42	42mm	150	5
SREC54	54mm	80	1

Cross Over



CODE	CROSS OVER	BOX	BAG
SRFCO15	15mm	100	25
SRFCO22	22mm	80	10



Male Iron

CODE	COUPLERS	BOX	BAG
SRCO22MI	22mm x 3/4" M.I.C	100	10
SRCO15MI	15mm x 1/2" M.I.C	100	10
SRCO15FI	15mm x 1/2" F.I.C	100	10
SRCO22FI	22mm x 3/4" F.I.C	100	10



Female Iron

CODE	ELBOWS	BOX	BAG
SREL15FI	15mm x 1/2" F.I.E	100	10
SREL22FI	22mm x 3/4" F.I.E	100	10
SREL15MI	15mm x 1/2" M.I.E	100	10
SREL22MI	22mm x 3/4" M.I.E	100	10

Couplers



Coupler

CODE	COUPLER	BOX	BAG
SRCO08	8mm	4000	25
SRCO10	10mm	4000	25
SRCO12	12mm	2500	25
SRCO15	15mm	1200	25
SRCO22	22mm	500	25
SRCO28	28mm	200	10
SRCO35	35mm	120	5
SRCO42	42mm	100	5
SRCO54	54mm	60	1



Reducing Coupler

CODE	REDUCING COUPLER	BOX	BAG
SRCO1008	10mm x 8mm	50	10
SRCO1510	15mm x 10mm	1000	25
SRCO2215	22mm x 15mm	700	25
SRCO2815	28mm x 15mm	20	10
SRCO2822	28mm x 22mm	20	10



Imperial Coupler

CODE	IMPERIAL COUPLER	BOX	BAG
SRCOI15	15mm x 1/2"	500	25
SRCOI22	22mm x 3/4"	100	25
SRCOI28	28mm x 1"	150	10
SRCOI35	35mm x 1 1/4"	90	10

Tap Connectors



Bent Tap Connector

CODE	BENT TAP	BOX	BAG
SRBTC151/2	15mm x 1/2"	300	25
SRBTC223/4	22mm x 3/4"	100	25



Straight Tap Connector

CODE	STRAIGHT TAP	BOX	BAG
SRSTC151/2	15mm x 1/2"	450	25
SRSTC153/4	15mm x 3/4"	250	25
SRSTC223/4	22mm x 3/4"	250	25

Pipe Cowl



CODE	PIPE COWL	BOX	BAG
SRU15	15mm	200	20

Tees



Branch Reducing

CODE	BRANCH REDUCING TEE	BOX	BAG
SRTE222215	22mm x 22mm x 15mm	250	5
SRTE282815	28mm x 28mm x 15mm	120	10
SRTE282822	28mm x 28mm x 22mm	120	10
SRTE353515	35mm x 35mm x 15mm	80	5
SRTE353522	35mm x 35mm x 22mm	70	5
SRTE353528	35mm x 35mm x 28mm	70	5
SRTE424215	42mm x 42mm x 15mm	40	5
SRTE424222	42mm x 42mm x 22mm	40	5
SRTE424228	42mm x 42mm x 28mm	40	5
SRTE424235	42mm x 42mm x 35mm	40	5
SRTE545415	54mm x 54mm x 15mm	35	5
SRTE545422	54mm x 54mm x 22mm	30	5
SRTE545428	54mm x 54mm x 28mm	30	5
SRTE545435	54mm x 54mm x 35mm	25	5
SRTE545442	54mm x 54mm x 42mm	25	5

CODE	END AND BRANCH REDUCING TEE	BOX	BAG
SRTE221515	22mm x 15mm x 15mm	250	10
SRTE281515	28mm x 15mm x 15mm	120	10
SRTE282215	28mm x 22mm x 15mm	120	10
SRTE282222	28mm x 22mm x 22mm	120	10



End Reducing Tee

CODE	END REDUCING TEE	BOX	BAG
SRTE221522	22mm x 15mm x 22mm	200	10
SRTE281528	28mm x 15mm x 28mm	120	10
SRTE282228	28mm x 22mm x 28mm	120	10



Equal Tee

CODE	EQUAL TEE	BOX	BAG
SRTE08	8mm	1000	25
SRTE10	10mm	900	25
SRTE12	12mm	800	25
SRTE15	15mm	500	25
SRTE22	22mm	200	25
SRTE28	28mm	120	10
SRTE35	35mm	60	5
SRTE42	42mm	40	2
SRTE54	54mm	20	1



Both Ends Reducing

CODE	BOTH END REDUCING TEE	BOX	BAG
SRTE151522	15mm x 15mm x 22mm	250	10
SRTE222228	22mm x 22mm x 28mm	120	10

Ball Valves

Gas Yellow 1/4 Turn

- Forged brass body
- Chrome plated ball
- Nickel Plated or Brass Valve
- Working Temperature -20° to +60°
- Working Pressure :MOP 5 (system 3)
- Compressioned end EN1254-2
- Steel lever handle
- Conform to EN331 : 1998A1 : 2010
- CE Approved Temperature test: 650°



CODE	GAS YELLOW 1/4 TURN LEVER BALL VALVE	BOX	BAG
BVLY15	15mm	50	1
BVLY22	22mm	40	1
BVLY28	28mm	35	1
BVLY35	35mm	1	1
BVLY42	42mm	10	1
BVLY54	54mm	10	1

Red & Blue 1/4 Turn

- 15mm - 54mm Supplied C/W spare blue handle
- Full Bore 15mm, 22mm 28mm
- Nickel plated
- BSEN331
- PN16
- Working Temperature -10° to +85°
- All Sizes WRAS Approved



CODE	RED & BLUE 1/4 TURN LEVER BALL VALVE	BOX	BAG
BVLBR15	15mm	50	1
BVLBR22	22mm	50	1
BVLBR28	28mm	25	1
BVLBR35	35mm	10	1
BVLBR42	42mm	10	1
BVLBR54	54mm	6	1

Red Butterfly Handle

- Full Bore
- Nickel plated
- BSEN331
- PN25
- Working Temperature -10° to +85°



CODE	RED BUTTERFLY HANDLE BALL VALVE	BOX	BAG
BVBR15	15mm	80	1
BVBR22	22mm	50	1
BVBR28	28mm	35	1

Red / Blue Lever Ball Valve



- Full Bore
- Nickel plated
- BSEN331
- BSPP FxF
- 1/4" - 2" PN40
- 2 1/2" - 4" PN16

CODE	RED / BLUE LEVER BALL VALVE	BOX	BAG
BVLR1/4FF / BVLB1/4FF	1/4" F x F Red / Blue Lever	1	1
BVLR3/8FF / BVLB3/8FF	3/8" F x F Red / Blue Lever	1	1
BVLR1/2FF	1/2" F x F Red / Blue Lever	1	1
BVLR3/4FF / BVLB3/4FF	3/4" F x F Red / Blue Lever	1	1

Blue Butterfly Handle

- Full Bore
- Nickel plated
- BSEN331
- PN25
- Working Temperature -10° to +85°



CODE	BLUE BUTTERFLY HANDLE BALL VALVE	BOX	BAG
BVBB15	15mm	80	1
BVBB22	22mm	50	1
BVBB28	28mm	35	1

Gas Yellow Lever

- British Gas Approved
- Full Bore
- Nickel plated
- BSEN331
- BSPP FxF
- 1/4" - 2" PN40
- 2 1/2" - 4" PN16



CODE	GAS YELLOW LEVER BALL VALVE	BOX	BAG
BVLY1/4FF	1/4" F X F	1	1
BVLY3/8FF	3/8" F X F	1	1
BVLY1/2FF	1/2" F X F	1	1
BVLY3/4FF	3/4" F X F	1	1
BVLY1FF	1" F X F	1	1
BVLY11/4FF	1 1/4" F X F	1	1
BVLY11/2FF	1 1/2" F x F	1	1
BVLY2FF	2" F X F	1	1
BVLY21/2FF	2 1/2" F X F	1	1

Float Valves



Brass Valve Part 1

CODE	BRASS FLOAT VALVE	BOX	BAG
FVPT1HP1/2	Float Valve Part 1 HP 1/2"	50	1
FVPT1HP3/4	Float Valve Part 1 HP 3/4"	30	1
FVPT1HP11/2	Float Valve Part 1 HP 1 1/2"	1	1



Brass Valve Part 2

FVPT2LP1/2	Float Valve Part 2 LP 1/2"	50	1
FVPT2HP1/2	Float Valve Part 2 HP 1/2"	50	1



Copper / Plastic Float Valve

CODE	FLOAT VALVES	BOX	BAG
FVBCOPPER	4 1/2" Copper Float Round	1	1
FVBP	4 1/2" Plastic Float Brass Insert	1	1

Check Valves



Brass / Bronze Double

Compression Ends to BSEN1254-2

CODE	BRASS DOUBLE CHECK VALVE	BOX	BAG
CVD15	15mm Brass	200	10
CVD22	22mm Brass	50	10
CVD28	28mm Brass	50	10
CVD35	35mm Bronze	1	1
CVD42	42mm Bronze	1	1
CVD54	54mm Bronze	1	1



Chrome Double / Single

Compression Ends to BSEN1254-2

CODE	CHROME DOUBLE CHECK VALVE	BOX	BAG
CVDC15	15mm Chrome Double	200	10
CVDC22	22mm Chrome Double	50	10
CVSC22	22mm Chrome Single	60	10



Brass Single

Compression Ends to BSEN1254-2

CODE	BRASS SINGLE CHECK VALVE	BOX	BAG
CVS15	15mm Brass Single	150	50
CVS22	22mm Brass Single	60	10
CVS28	28mm Brass Single	50	5



Brass Double Female

CODE	BRASS DOUBLE FEMALE CHECK VALVE	BOX	BAG
CVS1/2FF	1/2" Brass Double Female	10	1
CVS3/4FF	3/4" Brass Double Female	10	1



Spring Safety Valve

CODE	SPRING SAFETY MALE BAR	BOX	BAG
SSV12	SPRING SAFETY VALVE 1/2"	10	1

Gate Valves



Gate Valve to BS5154

Pressed steel hand wheels and compression ends to BSEN1254-2 with ID plates

CODE	GATE VALVE TO BS5154	BOX	BAG
GVBS15	15mm Gate Valve	50	5
GVBS22	22mm Gate Valve	50	5
GVBS28	28mm Gate Valve	30	5
GVBS35	35mm Gate Valve	20	1
GVBS54	54mm Gate Valve	10	1
GVBSL15	15mm Gate Valve Lockshield	50	5
GVBSL22	22mm Gate Valve Lockshield	50	5
GVBSL28	28mm Gate Valve Lockshield	50	5



Gate Valve Non BS

Pressed steel hand wheels and compression ends to BSEN1254-2 with ID plates

CODE	GATE VALVE NON BS	BOX	BAG
GVNBS15	15mm Gate Valve	50	5
GVNBS22	22mm Gate Valve	50	5
GVNBS28	28mm Gate Valve	30	5

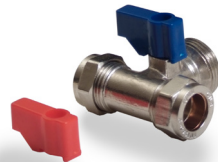
Washing Machine Valves



Chrome Straight

Compression Ends to BSEN1254-2

CODE	CHROME STRAIGHT MACHINE VALVES	BOX	BAG
WMTS15	15mm x 3/4" Chrome Straight	200	10
WMTSCV15	15mm x 3/4" C/W Check Valve	100	10



Chrome Tee

Compression Ends to BSEN1254-2

CODE	CHROME TEE MACHINE VALVES	BOX	BAG
WMTT15	15mm x 15mm x 3/4" Chrome Tee	100	10



Chrome Angled

Compression Ends to BSEN1254-2

CODE	CHROME ANGLED MACHINE VALVES	BOX	BAG
WMTA15	15mm x 3/4" Chrome Angled	100	10



Self Cutting Tap

CODE	CHROME SELF CUTTING TAP	BOX	BAG
WMTSCT15	15mm	80	1
WMTSCT22	22mm	25	1

Bib Taps



Hose Union

CODE	HOSE UNION BIB TAP TO BS1010	BOX	BAG
BTHU1/2	1/2" Hose Union Bib Tap	50	5
BTHU3/4	3/4" Hose Union Bib Tap	30	5
BTHULS1/2	1/2" Hose Union Bib Tap L/S C/W Key	10	5
HUKEY	HU Bib Tap Handle for use on L/S	10	5



Hose Union Double Check Valve

CODE	HOSE UNION BIB TAP DOUBLE CHECK VALVE TO BS1010	BOX	BAG
BTHUCV1/2	1/2" Hose Union Bib Tap	50	5
BTHUCV3/4	3/4" Hose Union Bib Tap	30	5



Copper Wall Plate

CODE	COPPER WALLPLATE	BOX	BAG
SU095	1/2" 15mm Copper Tail x 350 mm	50	1
SU095600	1/2" 15mm Copper Tail x 600 mm	24	1
SU095A	1/2" Wall Plate	150	10



Nut and Tail

CODE	NUT AND TAIL	BOX	BAG
BTHUNT1/2	1/2" Hose Union Nut and Tail	10	1
BTHUNT3/4	3/4" Hose Union Nut and Tail	10	1

Valves and Brassware

Isolating Valves



Chrome Isolating Valve
With compression ends to BSEN1254-2
Light Pattern

CODE	CHROME ISOLATING VALVE	BOX	BAG
IVC15	15mm Chrome Isolating Valve	250	10
IVC22	22mm Chrome Isolating Valve	120	10



Full Bore Chrome

CODE	FULL BORE CHROME ISOLATING VALVE	BOX	BAG
IVCFB15	15mm Full Bore Chrome	150	10
IVCFB22	22mm Full Bore Chrome	100	10



Brass Isolating Valve

CODE	BRASS ISOLATING VALVE	BOX	BAG
IVB15	15mm Brass Isolating Valve	150	10
IVB22	22mm Brass Isolating Valve	100	5



Chrome Plated With Lever

CODE	CHROME PLATED ISOLATING VALVE WITH LEVER	BOX	BAG
IVCL15	15mm Chrome Valve With Lever	150	10
IVCL22	22mm Chrome Valve With Lever	100	10
IVCLFB15	15mm Chrome ISO Valve F.B	150	10



Chrome Plated 90°

CODE	90° CHROME ISOLATING VALVE	BOX	BAG
IVCEL15	15mm 90 Degree Valve	150	10



Chrome Isolating Tee

CODE	CHROME ISOLATING TEE	BOX	BAG
IVCT15	15mm Chrome ISO Valve Tee	70	10

Pump Valves



Gate Valve Pump Union Ball Valve

CODE	PUMP VALVES	BOX	BAG
PV22	22mm Pump Valve Gate Type	50	2
PV28	28mm Pump Valve Gate Type	40	2
PU01	Standard Pump Union	1	1
PV28BT	28mm Pump Valve Ball Type	40	2

Stop Cocks



Copper CxC

With compression ends to BSEN1254-2

CODE	COPPER STOP COCK CxC	BOX	BAG
SC15	15mm	50	5
SC22	22mm	40	5
SC28	28mm	25	5



Poly CxP

With compression ends to BSEN1254-2

CODE	POLY STOP COCK CxP	BOX	BAG
SCP1520	15mm x 20mm	50	5
SCP1525	15mm x 25mm	50	5
SCP2020	20mm x 20mm	40	5
SCP2225	22mm x 25mm	25	5
SCP2525	25mm x 25mm	25	5



MDPE Insert

CODE	MDPE INSERT	BOX	BAG
SCL20	20mm MDPE Insert	500	25
SCL25	25mm MDPE Insert	500	25

Drain Off Cocks

Threaded Drain Off Cock



Type A
to BS2879

CODE	DRAIN OFF COCK to BS2879 TYPE A	BOX	BAG
SU005	1/2" Threaded	250	25
SU006	1/2" Threaded With Lockshield	1	1

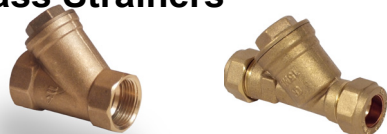
Solder Drain Off Cock



to BS2879

CODE	DRAIN OFF COCK to BS2879 TYPE A	BOX	BAG
SU010	15mm Solder	300	50
SU010A	15mm Solder Long Tail	50	10
SU011	15mm Solder With Lockshield	250	25

Brass Strainers



Y Strainer FxF Y Strainer CxC

CODE	Y STRAINERS	BOX	BAG
BRY15	15mm Brass Y Strainer CxC	100	10
BRY22	22mm Brass Y Strainer CxC	50	1
BRY12	1/2" Brass Y Strainer FxF	10	1
BRY34	3/4" Brass Y Strainer FxF	10	1
BRY1	1" Brass Y Strainer FxF	10	1
BRY114	1 1/4" Y Strainer FxF	10	1
BRY2	2" Brass Y Strainer FxF	10	1

Air Vents



Manual Air Vent

CODE	MANUAL AIR VENT	BOX	BAG
SU055	15mm Brass End Feed	250	50



Bottled Air Vent

CODE	BOTTLED AIR VENT	BOX	BAG
AAV	15mm Automatic Air Vent	10	1

Radiator Vents



CODE	RADIATOR VENTS
BRRWV14	1/4" Brass Radiator Vent
BRBRV12	1/2" Brass Radiator Vent
SU075	1/2" Chrome Radiator Vent
BRAAV18	1/8" Auto Air Vent Chrome Plated
BRBRV18	1/8" Brass Radiator Vent

Stop Cock Cover



CODE	STOP COCK COVER
314996	6" x 5" Stop Cock Cover

Sludge Cock



Sludge Cock

CODE	SLUDGE COCKS	BOX	BAG
BRSC22	22mm Sludge Cock	10	1

Stop Cock Adaptor



CODE	STOP COCK ADAPTOR
SCA2015	20mm x 15mm Adaptor
SCA2515	25mm x 15mm Adaptor
SCA2522	25mm x 22mm Adaptor

Chrome Service Valve Bent & Straight



With compression ends to BSEN1254-2

CODE	CHROME SERVICE VALVE	BOX	BAG
SVA15	15mm x 1/2" Chrome Angled	200	10
SVS15	15mm x 1/2" Chrome Straight	200	50
SVS22	22mm x 3/4" Chrome Straight	100	10

Safety Valve



CODE	SAFETY VALVE	BOX	BAG
BRPRV12	22mm / 15mm Pressure Reducing Valve C/W Gauge	10	1
PRV1230	1/2" Female Pressure Relief Valve 3Bar	10	1
PRV1260	1/2" Female Pressure Relief Valve 6Bar	10	1

Spring Heavy Pattern



CODE	SPRING CHECK CHECK VALVE	BOX	BAG
SCV15	15mm Spring Check Valve	1	1
SCV22	22mm Spring Check Valve	1	1
SCV28	28mm Spring Check Valve	1	1

Brass Swing Check Valve Horizontal Female



CODE	SWING CHECK VALVES	BOX	BAG
BRSCV12	1/2" Horizontal Female	10	1
BRSCV34	3/4" Horizontal Female	10	1
SCV11/2	1 1/2" Horizontal Female	1	1
SCV2	2" Horizontal Female	1	1

Automatic Bybass Valve



CODE	AUTOMATIC BYBASS VALVE	BOX	BAG
ABV22	22mm Automatic Bybass Valve	10	1

Brass Cap



BSPB

CODE	BRASS CAP
BRBC14	1/4" Brass Cap
BRBC38	3/8" Brass Cap
BRBC12	1/2" Brass Cap
BRBC34	3/4" Brass Cap
BRBC1	1" Brass Cap
BRBC114	1 1/4" Brass Cap
BRBC112	1 1/2" Brass Cap

Brass Plug Flanged



BSPB

CODE	BRASS PLUG
BRBP18	1/8" Brass Plug
BRBP14	1/4" Brass Plug
BRBP38	3/8" Brass Plug
BRBP12	1/2" Brass Plug
BRBP34	3/4" Brass Plug
BRBP1	1" Brass Plug
BRBP114	1 1/4" Brass Plug
BRBP112	1 1/2" Brass Plug
BRBP2	2" Brass Plug

Thermostatic Mixer Valve



CODE	Thermostatic Mixer Valve	BOX	BAG
TMV15	15mm Thermostatic Mixer Valve	24	1
TMV22	22mm Thermostatic Mixer Valve	12	1



Blanking Disk

CODE	BLANKING DISK	BOX	BAG
COBD15	Compression 15mm	2000	50
COBD22	Compression 22mm	800	50
COBD28	Compression 28mm	600	25

Brass Cap Crome Plated



CODE	BRASS CAP CROME PLATED	BOX	BAG
CPEC1/2"	1/2" End Cap	100	50

Valves and Brassware

Nipples



Brass Hexagon Nipple
BSPT

CODE	BRASS HEXAGON NIPPLE
BRHN18	1/8"
BRHN14	1/4"
BRHN38	3/8"
BRHN12	1/2"
BRHN34	3/4"
BRHN1	1"
BRHN114	1 1/4"



Brass Running Nipple
BSPP

CODE	BRASS RUNNING NIPPLE
BRBRN14	1/4" (18mm long)
BRBRN38	3/8" (20mm long)
BRBRN12	1/2" (25mm long)
BRBRN34	3/4" (27mm long)
BRBRN1	1" (31mm Long)



Brass Barrel Nipple
BSPT

CODE	BRASS BARREL NIPPLE
BRBBN18	1/8"
BRBBN14	1/4"
BRBBN38	3/8"
BRBBN12	1/2"
BRBBN34	3/4"
BRBBN1	1"
BRBBN114	1 1/4"
BRBBN112	1 1/2"

Brass Backnut



CODE	BRASS BACKNUT
BRBN12	1/2"
BRBN34	3/4"
BRBN1	1"
BRBN114	1 1/4"
BRBN112	1 1/2"

Tap Extension



CODE	TAP EXTENSIONS
BRTAPEX12	Brass Tap Extension Piece 1/2"
BRTAPEX34	Brass Tap Extension Piece 3/4"



Pressure Test Nipple

CODE	PRESSURE TEST NIPPLE
BRTN18	1/8"

Brass Bush



CODE	BRASS BUSH
BRBB1418	1/4" x 1/8"
BRBB3818	3/8" x 1/8"
BRBB3814	3/8" x 1/4"
BRBB1218	1/2" x 1/8"
BRBB1214	1/2" x 1/4"
BRBB1238	1/2" x 3/8"
BRBB3412	3/4" x 1/2"
BRBB112	1" x 1/2"
BRBB134	1" x 3/4"
BRBB11412	1 1/4" x 1/2"
BRBB11434	1 1/4" x 3/4"
BRBB1141	1 1/4" x 1"
BRBB112114	1 1/4" x 1 1/2"
BRBB11212	1 1/2" x 1/2"
BRBB11234	1 1/2" x 3/4"
BRBB1121	1 1/2" x 1"
BRBB21	2" x 1"
BRBB2114	2" x 1 1/4"
BRBB2112	2" x 1 1/2"

Brass Bush



(Chrome Plated)

CODE	BRASS BUSH CHROME PLATED
BRBB3412CP	3/4" X 1/2"

Immersion Heater Plug



CODE	IMMERSION HEATER PLUG
BRIHP214	2 1/4"
BRIHP134	1 3/4"

Brass Socket



BSPP

CODE	BRASS SOCKET
BRBS18	1/8"
BRBS14	1/4"
BRBS38	3/8"
BRBS12	1/2"
BRBS34	3/4"
BRBS1	1"
BRBS114	1 1/4"

Radiator Key



CODE	RADIATOR KEY	BOX	BAG
SU015	Brass Radiator Key	500	100

Munsen Rings



Munsen Ring

CODE	MUNSEN RING	BOX	BAG
SU077	15mm Brass	900	100
SU078	22mm Brass	700	50
SU079	28mm Brass	450	50
SU080	35mm Brass	300	50
SU081	42mm Brass	250	25
SU082	54mm Brass	150	25



Chrome Plated

CODE	CHROME PLATED MUNSEN RING	BOX	BAG
SU096	15mm Chrome	900	100
SU097	22mm Chrome	700	50
SU098	28mm Chrome	450	50
SU099	35mm Chrome	300	50
SU100	42mm Chrome	250	25
SU102	54mm Chrome	150	25

Pipe Clips Pressed



Pressed Pipe Clip

CODE	PRESSED PIPE CLIP	BOX	BAG
SU020	15mm Pressed Pipe Clips	500	50
SU025	22mm Pressed Pipe Clips	500	50
SU030	28mm Pressed Pipe Clips	400	25
SU031	35mm Pressed Pipe Clips	200	25
SU032	42mm Pressed Pipe Clips	150	10
SU033	54mm Pressed Pipe Clips	100	10



Chrome Pressed Pipe Clip

CODE	CHROME PRESSED PIPE CLIP	BOX	BAG
SU105	15mm Chrome Plated	500	50
SU106	22mm Chrome Plated	500	50
SU107	28mm Chrome Plated	400	25
SU108	35mm Chrome Plated	800	25
SU109	42mm Chrome Plated	150	10

Pipe Clips School Board



Cast Pipe Clip School Board

CODE	CAST PIPE CLIP	BOX	BAG
SU035	15mm Cast Pipe Clips	800	25
SU040	22mm Cast Pipe Clips	500	25
SU045	28mm Cast Pipe Clips	300	25
SU046	35mm Cast Pipe Clips	100	25
SU047	42mm Cast Pipe Clips	50	25
SU048	54mm Cast Pipe Clips	50	25

Munsen Ring Backplates Rod



Brass



Chrome

CODE	BRASS BACK PLATES M10	BOX	BAG
SU135	Munsen Ring Back Plate Male Brass	800	100
SU125	Munsen Ring Back Plate Female Brass	1000	100
SU220	M10 x 1mtr Rod	10	1

CODE	BRASS BACK PLATES M10	BOX	BAG
SU200	Munsen Ring Back Plate Male Chrome	800	25
SU201	Munsen Ring Back Plate Female Chrome	1000	25
SU220	M10 x 1mtr Rod	10	1

Copper Saddle Clip



CODE	SADDLE CLIPS	BOX	BAG
SU145	15mm Saddle Clip	800	25
SU146	22mm Saddle Clip	2000	100
SU147	28mm Saddle Clip	2000	100
SU148	35mm Saddle Clip	1500	100

Pipe Clips Plastic



- High stand off to allow for lagging
- Strengthened arms to ensure firm grip

Open Single Clip

CODE	OPEN SINGLE CLIP PIPE CLIP	INNER
P200	15mm	100
P201	22mm	100
P202	28mm	100



- Hinge design for repeated opening and closing
- High stand off to allow for lagging

Single Lock Clip

CODE	SINGLE LOCK CLIPS	INNER
P100	15mm	100
P101	22mm	100
P102	28mm	100



- Stand alone robust locking clip can be linked together to create multiple pipe runs
- Can be used with trunking

Single Link Lock Clip

CODE	SINGLE LINK LOCK CLIPS	INNER
P610	15mm	100
P611	22mm	100
P612	28mm	50



- Single screw fixing
- High stand off to allow for lagging
- Strengthened arms to ensure firm grip

Open Double Clip

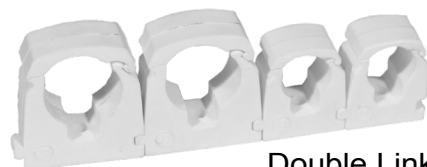
CODE	OPEN DOUBLE CLIP PIPE CLIP	INNER
P203	15mm	100
P204	22mm	100



- Hinge design for repeated opening and closing
- Single Screw Fixing

Double Lock Clip

CODE	DOUBLE LOCK CLIPS	INNER
P103	15mm	50
P104	22mm	50



Double Link Lock Clip

- Stand alone robust locking clip can be linked together to create multiple pipe runs
- Can be used with trunking

CODE	DOUBLE LINK LOCK CLIPS	INNER
P613	15mm	50
P614	22mm	50

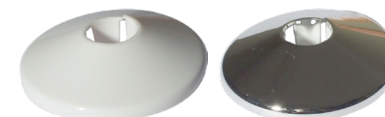
Support Posts



- Use with open and clip lock clips
- Use with lagging up to 30mm

CODE	SUPPORT POST	INNER
P400	15mm	100
P401	22mm	100

Pipe Collar White & Chrome



- Decorative, quick low cost solution to cover unsightly holes

CODE	PIPE COLLAR CHROME	INNER	CODE	PIPE COLLAR WHITE	INNER
P314	15mm Chrome	25	P311	15mm White	25
P315	22mm Chrome	25	P312	22mm White	25

Nail On Clips Screw Plugs



CODE	NAIL ON CLIP / SCREW	INNER
M100	15mm Nail On Clip White	100
M102	22mm Nail On Clip White	100
M103	28mm Nail On Clip White	50
F100	Red Plug 5.5mm Diameter (screw sized 6, 8, 10)	1
F101	Brown Plug 7mm Diameter (screw sized 10, 12, 14)	1



Lead Loc

CODE	LEAD LOC
C1001	3/8" 5lb lead x 15mm Copper
C1002	1/2" 6lb lead x 15mm Copper
C1003	1/2" 7lb lead x 15mm Copper
C1004	1/2" 9lb lead x 22mm Copper
C1005	3/4" 9lb lead x 22mm Copper
C1006	3/4" 11lb lead x 22mm Copper



Lead Loc Plus

CODE	LEAD LOC PLUS
DP2001	1/2" 7lb Lead x 20mm MDPE
DP2002	1/2" 7lb Lead x 25mm MDPE
DP20026	1/2" 6lb Lead x 25mm MDPE



CuBrAlco is pleased to stock and distribute the complete range of Lead-Loc plumbing fittings from Melimatic Ltd.

Lead was used extensively in plumbing and is still therefore a concern for plumbers working with old buildings. As lead is no longer allowed to be used for potable water supply the best solution is to remove it and replace with copper, but this is not always practical or possible and there may be situations where a connection from an existing lead pipe to copper or plastic pipe needs to be made.

Radiator Valves

Lock Shields to EN1215



Lock Shield

CODE	ANGLED LOCK SHIELD	BOX	BAG
RVAL151/2	Angled Lock Shield 15mm (1/2" nut)	70	70
RVAL15	Angled Lock Shield 15mm	60	1
RVSL10	Straight Lock Shield 10mm	60	1
RVSL15	Straight Lock Shield 15mm	40	1



Angled Lock Shield With Drain Off

CODE	ANGLED LOCK SHIELD DRAIN OFF COCK	BOX	BAG
RVALDO15	Angled Lock Shield with Drain of Cock 15mm 3/4" Nut	50	1



Corner Lock Shield

CODE	CORNER LOCK SHIELD	BOX	BAG
RVCL15CP	Lock Shield Corner Valve 15mm	40	1



Lock Shield Fully Chromed

CODE	STRAIGHT / ANGLED LOCK SHIELD	BOX	BAG
RVSLCP15	Straight Lock Shield Fully Chromed 15mm Light Pattern	40	40
RVALCP15	Angled Lock Shield Fully Chromed 15mm Light Pattern	60	1
RVALCP15HP	Angled Lock Shield Fully Chromed 15mm Heavy Patten	40	1



Elegance Chrome Head Straight

CODE	ELEGANCE CHROME HEAD STRAIGHT	BOX	BAG
RVSTWCP15	Elegance Chrome 15mm	40	1



Elegance Fully Chromed Straight

CODE	ELEGANCE FULLY CHROMED STRAIGHT	BOX	BAG
RVSTCP15	Elegance Fully Chromed Straight 15mm	40	1

Elegance Thermostatic Radiator Valves

2 Year Warranty



Elegance 90°

CODE	ELEGANCE 90° THERMOSTATIC RADIATOR VALVE	BOX	BAG
RVATWCP15	Elegance 90° 15mm	40	1

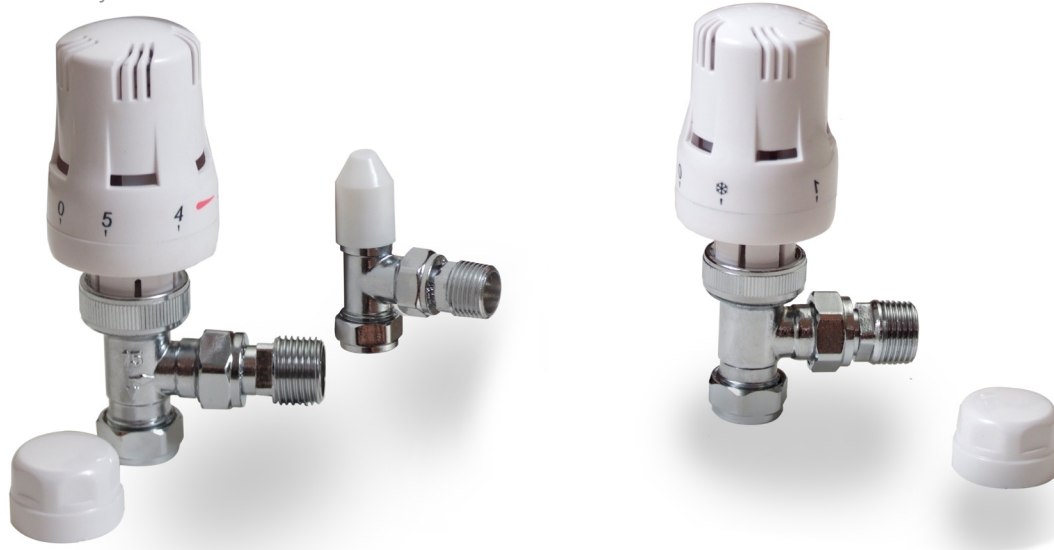


Elegance Fully Chromed 90°

CODE	ELEGANCE FULLY CHROMED	BOX	BAG
RVATCP15	Elegance Fully Chromed 90° 15mm	40	1

Evolve Thermostatic Radiator Valves

2 Year Warranty



Evolve Twin Pack

Supplied with lock shield and decorators cap

CODE	EVOLVE TWIN PACK	BOX	BAG
RVATL15	Evolve Twin Pack - 90° Valve 15mm	20	1

Evolve Contract 90°

CODE	EVOLVE ANGLED	BOX	BAG
RVAT15	Evolve 90° 15mm	40	1

Radiator valves have thermostatic head and reversible bi-directional body. Built-in sensor with liquid filled element. Graduated scale from 0-5 corresponding to setting ranges from 7° - 28° and frost protection setting. Fully tested to 10 bar. Max pressure difference 0.8 Bar. Max flow temperature 120°. Can be mounted horizontally or vertically. Valve has 1/2" nut.

Radiator Vents



CODE	RADIATOR VENTS
BRRWV14	1/4" Brass Radiator Vent
BRBRV12	1/2" Brass Radiator Vent
SU075	1/2" Chrome Radiator Vent
BRAAV18	1/8" Auto Air Vent Chrome Plated
BRBRV18	1/8" Brass Radiator Vent

Radiator Key



CODE	RADIATOR KEY	BOX	BAG
SU015	Brass Radiator Key	500	100

Radiator Tails



CODE	RADIATOR Tails	BAG
RTAIL40	40mm Adjustable Radiator	1
RTAIL1230T	1/2" x 15mm Telescopic TRV 30mm Long	1
RTAIL1260T	1/2" x 15mm Telescopic TRV 50mm Long	1
RTAIL1260R	1/2" x 15mm Rigid TRV 60mm Long	1

P1 Single Sleeve



Corrugated Stainless Steel Tubing (CSST)

CODE	STAINLESS STEEL
CSSTEUDN1530M	DN15 x 30m
CSSTEUDN1575M	DN15 x 75m
CSSTEUDN2030M	DN20 x 30m
CSSTEUDN2075M	DN20 x 75m
CSSTEUDN2530M	DN25 x 30m
CSSTEUDN2545M	DN25 x 45m
CSSTEUDN2575M	DN25 x 75m
CSSTEUDN2590M	DN25 x 90m
CSSTEUDN3230M	DN32 x 30m
CSSTEUDN3245M	DN32 x 45m
CSSTEUDN3275M	DN32 x 75m
CSSTEUDN3290M	DN32 x 90m
CSSTEUDN4045M	DN40 x 45m
CSSTEUDN4075M	DN40 x 75m
CSSTEUDN5045M	DN50 x 45m



1x Coil
2x Male Fitting
1x Instructions

Contractor Kit (CSST)

CODE	CONTRACTOR KIT
CSSTKITEUDN2010M	DN20 x 10M
CSSTKITEUDN2015M	DN20 x 15M
CSSTKITEUDN205M	DN20 x 5M
CSSTKITEUDN2510M	DN25 x 10M
CSSTKITEUDN2515M	DN25 x 15M
CSSTKITEUDN255M	DN25 x 5M
CSSTKITEUDN3210M	DN32 x 10M
CSSTKITEUDN3215M	DN32 x 15M
CSSTKITEUDN325M	DN32 x 5M

P2 Pipe in Pipe Double Sleeve



Corrugated Stainless Steel Tubing (CSST)

CODE	STAINLESS STEEL
P2DN2030M	DN20 x 30m
P2DN2075M	DN20 x 75m
P2DN2530M	DN25 x 30m
P2DN2545M	DN25 x 45m
P2DN2575M	DN25 x 75m
P2DN2590M	DN25 x 90m
P2DN3245M	DN32 x 45m
P2DN3275M	DN32 x 75m
P2DN3290M	DN32 x 90m
P2DN4045M	DN40 x 45m
P2DN4075M	DN40 x 75m
P2DN5045M	DN50 x 45m



1x Coil
2x Male Fitting
1x Instructions

Contractor Kit (CSST)

CODE	CONTRACTOR KIT
P2KITDN2010M	DN20 x 10m
P2KITDN2015M	DN20 x 15m
P2KITDN2510M	DN25 x 10m
P2KITDN2515M	DN25 x 15m
P2KITDN3210M	DN32 x 10m
P2KITDN3215M	DN32 x 15m



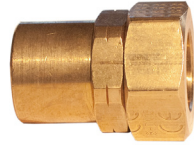
Straight Coupling

CODE	STRAIGHT COUPLING
XR2CEUDN15	DN15
XR2CEUDN20	DN20
XR2CEUDN25	DN25
XR2CEUDN32	DN32
XR2CEUDN40	DN40
XR2CEUDN50	DN50



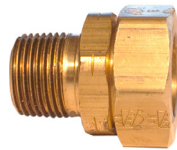
Tee

CODE	SERIES TEE FITTING
XR2TEUDN15	DN15
XR2TEUDN20	DN20
XR2TEUDN25	DN25



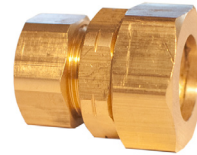
Straight Female Coupling
(Adapter / Nut / Bushing)

CODE	STRAIGHT FEMALE
XR2FEUDN15	DN15 - 1/2"
XR2FEUDN20	DN20 - 3/4"
XR2FEUDN2015P	DN20 - 1/2"



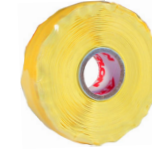
Straight Male Fitting
(Adapter / Nut / Bushing)

CODE	STRAIGHT MALE FITTING
XR2MEUDN15	DN15 - 1/2"
XR2MEUDN20	DN20 - 3/4"
XR2MEUDN25	DN25 - 1"
XR2MEUDN32	DN32 1 - 1/4"
XR2MEUDN40	DN40 1 - 1/2"
XR2MEUDN50	DN50 - 2"



Gastite x Copper Compression

CODE	Gastite x Copper Compression
XR2CCEUDN15X15	DN15 x 15
XR2CCEUDN2015	DN20 x 15
XR2CCEUDN2022	DN20 x 22
XR2CCEUDN2522	DN 25 x 22
XR2CCEUDN2528	DN25 x 28
XR2CCEUDN3222	DN 32 x 22
XR2CCEUDN3228	DN 32 x 28
XR2CCEUDN3235	DN32 x 35



Repair Tape

CODE	REPAIR TAPE
GT-TAPE	Self amalgamating Jacket Repair Tape



Cutters

CODE	CUTTERS
GTCUTTER-LG	Cutter With Flat Follers (up to 2")
GTCUTTER-SM	Cutter With Flat Follers (3/8" to 1")
GTBLADE-LG	Replacement Blade for GTCUTTER-LG
GTBLADE-SM	Replacement Blade for GTCUTTER-SM



Sleeving

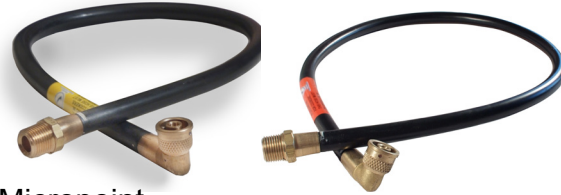
CODE	SLEEVING
GTDUCTDN2025-50M	50mm Sleeve Ø 45mm
GTDUCTDN3240-50M	63mm Sleeve Ø 58mm

Cooker Hoses



Straight Bayonet

CODE	GAS STRAIGHT BAYONET COOKER HOSE
CH31/2NGS	3Ft x 1/2" Natural Gas Straight
CH41/2NGS	4Ft x 1/2" Natural Gas Straight
CH61/2NGS	6Ft x 1/2" Natural Gas Straight



Micropoint

CODE	GAS MICROPPOINT COOKER HOSE
CH33/8NGMP	3Ft x 3/8" Natural Gas Micropoint
CH363/8NGMP	3'6" x 3/8" Natural Gas Micropoint
CH43/8NGMP	4Ft x 3/8" Natural Gas Micropoint
CH363/8LPGMP	3'6" X 3/8" LPG Micropoint



Nut & Union

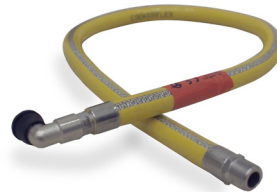
CODE	GAS NUT & UNION COOKER HOSE
CH31/2NGNUT	3Ft x 1/2" Natural Gas Nut & Union
CH41/2NGNUT	4Ft x 1/2" Natural Gas Nut & Union



LPG Straight EN 14800

CODE	LPG STRAIGHT BAYONET COOKER HOSE
CHU1/2125SB	1.25m x 1/2" Straight Bayonet Cooker Hose
CHU1/21SB	1m x 1/2" Straight Bayonet Cooker Hose

LPG Micropoint EN 14800



CODE	LPG MICROPPOINT BAYONET COOKER HOSE
CHU1/2125MA	1.25m x 1/2" Angled Micropoint Cooker Hose
CHU1/21MA	1m x 1/2" Angled Micropoint Cooker Hose

Oil Line Products

All Fire Valves OFTEC / BSRIA Approved



Aluminium Oil Filter

CODE	ALUMINIUM OIL FILTER METAL BOWL
OFFILT38	3/8" F X F Aluminium Oil Filter



Wheelhead Fire Valve

CODE	WHEELHEAD FIREVALVE
OFFV3810	3/8" x 10mm Wheelhead Firevalve

Remote Acting Fire Valve 3/8" FxF



CODE	REMOTE ACTING FIRE VALVE
OFRAF11/266	1.5mtr x 66°C
OFRAF366	3mtr x 66°C
OFRAF666	6mtr x 66°C
OFRAF966	9mtr x 66°C
OFRAF11/290	1.5mtr x 90°C
OFRAF390	3mtr x 90°C
OFRAF690	6mtr x 90°C
OFRAF990	9mtr x 90°C

Push Button Oil Gauge



CODE	PUSH BUTTON OIL GAUGE
OFG4	4Ft Push Button Oil Gauge



Mini Ball Valves Advantica Approved EN331

Straight

CxC



C x MI

CODE	STRAIGHT MINI BALL VALVES
GFGBVS08	8mm Compression Mini Ball Valve Straight
GFGBVS1008	10mm x 8mm Compression Mini Ball Valve
GFGBVS10	10mm Compression Mini Ball Valve
GFGBVS15	15mm Compression Mini Ball Valve
GFGBVS1508	15mm x 8mm Compression Mini Ball Valve
GFGBVS1510	15mm x 10mm Compression Mini Ball Valve
GFGBVS1512MM	15mm x 12mm CxC comp Mini Ball Valve
GFGBVS0814	8mm x 1/4" C X MI Mini Ball Valve Straight
GFGBVS1014	10mm x 1/4" C x MI Mini Ball Valve
GFGBVS1038	10mm x 3/8" C x MI Mini Ball Valve
GFGBVS1512	15mm x 1/2" C X MI Compression Mini Ball Valve

Angled



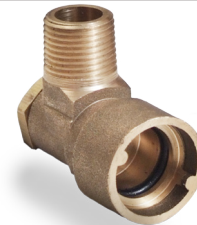
CODE	ANGLED MINI BALL VALVES
GFGBVA08	8mm Compression Mini Ball Valve Angled
GFGBVA10	10mm Compression Mini Ball Valve Angled
GFGBVA15	15mm Compression Angled Mini Ball Valve
GFGBVA1508	15mm x 8mm Compression Angled Ball Valve
GFGBVA1510	15mm x 10mm Compression Angled Ball Valve
GFGBVSWP08	8mm Compression Angled Mini Ball Valve C/W Wall Plate
GFGBVSWP10	10mm Compression Angled Mini Ball Valve C/W Wall Plate

Gascocks & Accessories



Straight Bayonet Socket

CODE	STRAIGHT BAYONET SOCKET NG/LPG
SB12	1/2" x 3/8" Straight Bayonet Socket NG / LPG



Angled Bayonet Socket

CODE	ANGLED BAYONET SOCKET NG/LPG
AB12	1/2" Angled Bayonet Cooker Socket NG / LPG



Micropoint Socket

CODE	MICROPOINT SOCKET
MPS	3/8" Micropoint Socket



Meter Union

CODE	METER UNION
GFGMU	22mm x 1" Grooved
GFGMU2228	22mm FI / 28mm MI x 1" Universal (Not Grooved)

ISO Gas Valve



CODE	ISO GAS VALVE
GFGV08	8mm ISO Gas Valve
GFGV10	10mm ISO Gas Valve
GFGV15	15mm ISO Gas Valve
GFGV22	22mm ISO Gas Valve



Compression Rigid Fan

CODE	COMPRESSION RIGID FAN GASCOCK
GFCORFG15	15mm Compression Rigid Fan
GFCORFG22	22mm Compression Rigid Fan



Capillary Rigid Fan

CODE	CAPILLARY RIGID FAN GASCOCK
GFEFRFG15	15mm Capillary Rigid Fan
GFEFRFG22	22mm Capillary Rigid Fan



Capillary Drop Fan Union

CODE	CAPILLARY DROP FAN UNION GASCOCK
GFEFDG15MM	15mm Capillary Drop Fan Union

Gas Restrictors



Restrictor Tube / Fixing Kits

CODE	RESTRICTOR TUBE
GFRTBR12512	1.25m x 12mm Brass Plated
GFRTBR112	1m x 12mm Brass Plated
GFRTBZ112	1m x 12mm Bronze Plated
GFRTBZ12512	1.25m x 12mm Bronze Plated
GFRTBZ18	1m x 8mm Bronze Plated
GFRTCH12508	1.25m x 8mm Chrome Plated
GFRTCH108	1m x 8mm Chrome Plated
GFFKC	Gas Fire Fixing Kit Chrome



Restrictor Elbow

CODE	RESTRICTOR ELBOW
GFREL108	1" x 8mm C/P Restrictor
GFREL208	2" x 8mm C/P Restrictor

Cooker Stability Bracket



CODE	COOKER STABILITY BRACKET
CSB	Cooker Stability Bracket

Stability Chain Snap Shackle



CODE	STABILITY CHAIN SNAP SHACKLE
SCSP	Stability Chain Snap Shackle

Gas Fire Back Plate



CODE	GAS FIRE BACK PLATE
GFFB2418	Gas Fire Back Plate 24" x 18"
GFFB3636	Gas Fire Back Plate 36" x 36"

BSP Wall Plate



CODE	BSP ELBOW WALL PLATE
GFELWP12	15mm x 1/2" Bsp Elbow Wall Plate
GFCOWP15	15mm x 1/2" Bsp Straight Wall Plate



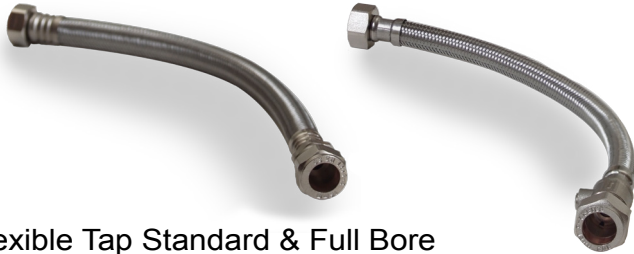
We stock Gastite Corrugated Stainless Steel Tubing on Page 46



Our range of Yellow Covered PVC Copper Tube on Page 20



Tap Connectors



Flexible Tap Standard & Full Bore

CODE	TAP CONNECTOR STANDARD 9.5mm FULL BORE 12.5mm	BOX	BAG
FTC151/230SB	15 X 1/2" X 30cm Standard Bore	100	10
FTC151/250SB	15 X 1/2" X 50cm Standard Bore	100	10
FTC153/430SB	15 X 3/4" X 30cm Standard Bore	100	10
FTC153/450SB	15 X 3/4" X 50cm Standard Bore	100	10
FTC223/430SB	22 X 3/4" X 30cm Standard Bore	100	10
FTC223/450SB	22 X 3/4" X 50cm Standard Bore	100	10
FTC151/230SBISO	15 X 1/2" X 30cm Isolating Valve Standard Bore	100	10
FTC223/430SBISO	22 X 3/4" X 30cm Isolating Valve Standard Bore	50	10
FTC223/430FB	22 X 3/4" X 30cm Full Bore	100	10

Filling loops



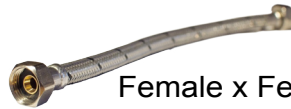
Filling Loop Straight

CODE	FILLING LOOP STRAIGHT	BOX	BAG
FLSC	Filling Loop Straight C/W 2 Caps and Handle Part L Compliant	60	1



Flexible C x C Standard & Full Bore

CODE	STANDARD & FULL BORE FLEXIBLE CXC TAP CONNECTORS	BOX	BAG
FTC222230SB	22 x 22 x 30cm Standard Bore	100	10
FTC222250SB	22 x 22 x 50cm Standard Bore	100	10



Female x Female flexi Standard Bore

CODE	FEMALE X FEMALE FLEXI	BOX	BAG
FTC1/21/230SB	1/2" x 1/2" x 30cm S.B	100	10
FTC1/21/250SB	1/2" x 1/2" x 50cm S.B	100	10



Flexible Mixer Tap

CODE	MIXER TAP FLEXIBLE TAP CONNECTOR	BOX	BAG
FTC151030M	PAIR 15 x 10 x 30cm	50	10
FTC151230M	PAIR 15 x 12 x 30cm	50	10

Washing Machine Hoses



CODE	WASHING MACHINE HOSES	BOX	BAG
WMH1.5B	1.5mtr Blue F3/4 x F3/4	60	1
WMH1.5R	1.5mtr Red F3/4 x F3/4	60	1
WMH2.5B	2.5mtr Blue F3/4 x F3/4	30	1
WMH2.5R	2.5mtr Red F3/4 x F3/4	30	1

Monobloc Flexible Tap Adaptors



CODE	MONOVLOC TAP ADAPTORS	BOX	BAG
SU300	15mm x 3/8" Pair	0	1

PTFE TAPE



WRAS Approved BS7786: 1995

CODE	WRAS APPROVED PTFE TAPE	BOX	BAG
PTFE	12mm X 0.075mm X 12m	1000	10



Gas BS6974: 1989

CODE	GASS PTFE TAPE	BOX	BAG
PTFEGAS	12mm X 0.075mm X 12m	250	10

Solder



CODE	SOLDER LEADED	BOX
SOLDER-LEADED	500gm Reel 3.25mm	20
SOLDER-LEADED250	250gm Reel 3.25mm	20



CODE	SOLDER LEAD FREE	BOX
SOLDER-LEADFREE	500gm Reel 3.25mm	20
SOLDER-LEADFREE250	250gm Reel 3.25mm	20

Flux / Jointing



CODE	BOSS WHITE	BOX
POWERFLUX350	350GRM	10



CODE	BOSS WHITE	BOX
LACOFUX	475GRM	24

Fernox Leak Sealer



CODE	FERNOX LEAK SEALER
LSX LEAK SEALER	Fernox LS-X Leak Sealer 50ML



Coupler

CODE	COUPLER WHITE	BAG	S BOX
PEM0415W	15mm	10	60
PEM0422W	22mm	5	30



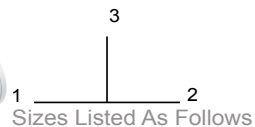
Reducing Coupler

CODE	REDUCING COUPLER WHITE	BAG	S BOX
PEM201510W	15mm x 10mm	10	80
PEM202215W	22mm x 15mm	5	40



Equal Tee

CODE	EQUAL TEE WHITE	BAG	S BOX
PEM0215W	15mm	5	40
PEM0222W	22mm	5	15



Reducing Tee

CODE	REDUCING TEE WHITE	BAG	S BOX
PEM3022AW	22mm x 22mm x 15mm	5	15



Equal Elbow

CODE	EQUAL ELBOW WHITE	BAG	S BOX
PEM0315W	15mm	10	50
PEM0322W	22mm	5	25



Stem Elbow

CODE	STEM ELBOW WHITE	BAG	S BOX
PEM221515W	15mm	10	80
PEM222222W	22mm	5	30



Speedpex Coil

British Gas accepted for water pipe in vented and sealed central heating systems

CODE	SPEEDPEX COIL WHITE	BAG	S BOX
15BPEX-25C	15 x 25 Barrier Pipe WH	1	8



Reducer

CODE	REDUCER WHITE	BAG	S BOX
PEM062215W	22mm x 15mm	10	70



Superseal Pipe Insert

CODE	SUPERSEAL PIPE INSERT	BAG	S BOX
STS15	15mm	50	500
STS22	22mm	25	250



Straight Tap Connector

CODE	STRAIGHT TAP CONNECTOR	BAG	S BOX
PEMSTC1514	15mm x 1/2"	5	50



Stop End

CODE	STOP END WHITE	BAG	S BOX
PSE4615W	15mm	10	200
PSE4622W	22mm	5	80

Immersion Heaters

BEAB Approved



CODE	IMMERSION HEATER & THERMOSTAT
IHCU11	11" Copper
IHCU18	18" Copper
IHCU27	27" Copper
IHIN11	11" Incolloy
IHIN14	14" Incolloy
IHIN18	18" Incolloy
IHIN27	27" Incolloy

Universal Cylinder Union Flange



CODE	UNIVERSAL CYLINDER UNION FLANGE
BRPRVF	Universal Cylinder Union

Scale Reducer



Evolve Lime Buster

CODE	SCALE REDUCER
SCARED22	22mm

Don't Miss

Need to buy copper tube?
Check out our full stock range on page 20



Concealed Cisterns

Miniflo Cistern

C/W Round Button Dual Flush



CODE	MINIFLO CISTERN
322875	SISO
322876	BISO

Mirage Cistern

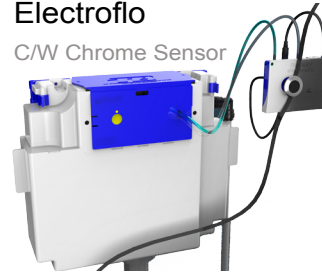
C/W Front Lever



CODE	MIRAGE CISTERN
316399	SISO

Electroflo

C/W Chrome Sensor



CODE	ELECTROFLO BATTERY
322899	C/W 40mm Chrome Sensor
322898	C/W 100mm Chrome Sensor

CODE	ELECTROFLO MAINS
322890	C/W 40mm Chrome Sensor
322892	C/W 100mm Chrome Sensor



Vantage Cisterns

CODE	VANTAGE CISTERNS NO JACKET
319194	Round Button D/F
322420	Dio Button D/F
325284	Piazza Button D/F
323376	Oyster Push Plate D/F
326916	Reef Plate D/F
318750	Royal Button S/F
325286	Piazza Button S/F
319787	Round Button S/F

CODE	VANTAGE CISTERNS C/W JACKET
319710	Round Button D/F
322422	Dio Button D/F
325285	Piazza Button D/F
323377	Oyster Push Plate D/F



Upgrade Kit

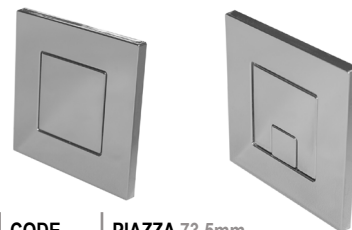
CODE	UPGRADE KIT
326096	Vantage Electroflo Upgrade Kit (mains operated)
326095	Vantage Electroflo Upgrade Kit (battery operated)

Flush Buttons and Push Plates Chrome



CODE	ROUND 73.5mm
327736	Round Single Flush
327732	Round Dual Flush

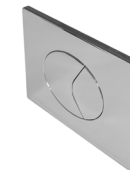
CODE	ROYAL / DIO 51mm
327735	Royal Single Flush
327733	Dio Dual Flush



CODE	PIAZZA 73.5mm
325277	Piazza Single Flush
327734	Piazza Dual Flush



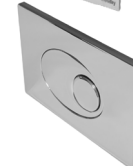
CODE	CONE 50mm / DOME 91mm
316269	Cone Single Flush
316562	Dome Single Flush



CODE	OYSTER 232mm x 152mm
322903	Oyster Dual Flush



CODE	CORAL PLATE 232mm x 152mm
326392	Coral Dual Flush



CODE	PEBBLE 232mm x 152mm
322904	Pebble Dual Flush

Exposed Cisterns

Acclaim Cistern SISO



CODE	ACCLAIM CISTERN SISO
315196	L/L White Lever
317712	H/L Chrome Lever

Slimline L/L Cistern

C/W Front Lever



CODE	SLIMLINE CISTERN
313280	BIBO
315262	SISO

Tri - Shell Turbo



CODE	TRI - SHELL TURBO
317978	SISO H/L
318021	BIBO L/L

Tri - Well H/L Turbo



CODE	TRI - WELL H/L TURBO
313510	SISO LH or RH Chain Pull

Hydroflo Telescopic Bottom Inlet



CODE	HYDROFLO TELESCOPIC BOTTOM INLET
320714	Standard
324302	Brass Tail
324301	Delay Fill With Brass Tail
324277	9 1/2" Delay Fill Regulated Flow

Hydroflo Side Inlet



CODE	HYDROFLO SIDE INLET
313079	Standard
334686	Delay Fill
324299	Brass Tail
324298	Delay Fill With Brass Tail

Cistern Components

Turbo 88 Syphon



CODE	TURBO 88 SYPHON
316965	7 1/2"
313639	8"
319023	8 1/2"
315293	9"
313673	9 1/2"
313879	10"
324395	7 1/2" - 9 1/2" Adjustable
319228	Spares Pack

Turbo 44 Syphon



CODE	TURBO 44 SYPHON
315749	9" Turbo 44 Syphon

Turbo S1 -11 Syphon



CODE	TURBO S1-11 SYPHON
322318	8" Plastic Nuts & Outlets
318743	9" Plastic Nuts & Outlets

Electronic Urinal Control



CODE	ELECTRONIC URINAL CONTROL
323107	Mains Adaptor for Concealed Cisterns

Pinto Pneumatic



CODE	PINTO PNEUMATIC SF Valve
316129	Pushflo Cistern

Hi Flo Syphon



CODE	HI FLO SYPHON
313553	S9 HI FLO SYPHON 9"

Niagara & Victoria Dual Flushing Valves



CODE	NIAGARA & VICTORIA DUAL FLUSH
313348	Niagara Mechanical
327628	Niagara Pneumatic
325648	Victoria Mechanical
314318	Chrome Button Assembly Niagara Mechanical

Cistern Accessories



CODE	CISTERN ACCESSORIES
314962	50mm Cone Ring
315604	51mm Backnut
319678	51mm Capnut
322326	Tapered Flush Bend 51mm - 41mm 390mm x 290mm
323782	Tapered Flush Bend 51mm - 41mm 457mm x 457mm
319726	Rubber Diaphragm For Hydroflo
W18	5" Oval Syphon Diaphragm
W1	Siamp Diaphragm Washer
W19	5" Round Syphon Dia Washer
W16	Hushflow Washer

DEFINITIONS

In these Terms and Conditions, the following words have the following meanings:

‘Buyer’	the person(s) or company whose order for goods is accepted by the Seller;
‘Contract’	any contract between the Seller and the Buyer for the sale and purchase of the Goods;
‘Goods’	any goods which the Seller is to supply to the Buyer (including any of them or any part of them);
‘Seller’	CuBrAlco Limited with registered company number 03055926 whose registered office is at Drayton Court, Drayton Road, Shirley, Solihull West Midlands, B90 4NG

APPLICATION OF CONDITIONS

No binding Contract shall be deemed to have been effected until confirmed in writing by the Seller. Contracts are accepted upon and subject to the Terms and Conditions printed herein to the exclusion of all other terms and conditions (including any terms or conditions which the Buyer purports to apply under any purchase order, confirmation of order or similar document). Unless expressly accepted in writing any qualifications of these Terms and Conditions contained in any written or printed document of the Buyer shall be deemed to be inapplicable. Each order for Goods by the Buyer from the Seller shall be deemed to be an offer by the Buyer to purchase Goods subject to these Terms and Conditions. Any variation or addition to any Contract and any representations about the Goods shall only be binding on the Seller if accepted in writing and signed by a Director of the Seller. Acceptance of delivery of the Goods shall be deemed to be conclusive evidence of the Buyer's acceptance of these Terms and Conditions. The Buyer must ensure that the terms of its order and any applicable specification are complete and accurate. Any quotation is given on the basis that no Contract will come into existence until the Seller despatches an acknowledgement of order to the Buyer. Quotations by the Seller shall be open for acceptance by the Buyer within 7 days from the date of the quotation provided the Seller has not previously withdrawn it.

Subject to condition 4.8 no order which the Seller has accepted may be cancelled by the Buyer except with the written agreement of the Seller and on terms that the Buyer shall indemnify the Seller in full against all losses (including loss of profit), costs, damages, charges and expenses suffered or incurred by the Seller as a result of such cancellation.

DESCRIPTION AND SPECIFICATION

The description of the Goods shall be as set out in the Seller's quotation. All drawings, descriptive matter, specifications and advertising issued by the Seller and any descriptions or illustrations contained in the Seller's catalogues or brochures are issued or published for the sole purpose of giving an approximate idea of the Goods described in them. They will not form part of the Contract. The Seller may make any changes to the specification, design, materials or finishes of the Goods which are required to conform with any applicable safety or other statutory requirements.

DELIVERY

Delivery of the goods shall be made ex-works (Incoterms 2000) unless otherwise agreed between the parties. The Buyer will take delivery of the Goods within 7 days of the Seller giving it notice that the Goods are ready for delivery. If carriage is required in accordance with condition 4.1 the Goods shall be delivered by such means as the Seller thinks fit unless the Buyer has specified in its order the details of the contract with a carrier which it reasonably requires having regard to the nature of the Goods and the other circumstances of the case. The carrier shall be deemed to be the Buyer's agent except for the purposes of sections 44, 45 and 46 of the Sale of Goods Act 1979. Delivery of the Goods shall be accepted at any time of day. Any dates specified by the Seller for delivery of the Goods are approximate only and may not be made of the essence by notice. If no dates are so specified, delivery will be within a reasonable time. The Seller will not be liable for any loss (including loss of profit), costs, damages, charges or expenses caused directly or indirectly by any delay in the delivery of the Goods (even if caused by the Seller's negligence) nor unless such delay exceeds 180 days will any delay entitle the Buyer to terminate or rescind the Contract. If the Buyer fails to take delivery of any of the Goods when they are ready for delivery or to provide any instructions, documents, licences or authorisations required to enable the goods to be delivered on time (except because of the Seller's fault), risk in the Goods will pass to the Buyer (including, without limitation, for loss or damage caused by the Seller's negligence, the Goods will be deemed to have been delivered and (without prejudice to its rights) the Seller shall be entitled: -

4.8.1 to store the goods at its premises or elsewhere until actual delivery or sale and to charge the Buyer for all related costs and expenses; and/or

4.8.2 following written notice to the Buyer to sell any of the Goods at the best price reasonably obtainable in the circumstances and to charge the Buyer for any shortfall below the price under the Contract.

The Buyer will provide at its expense at the Delivery Point adequate and appropriate equipment and manual labour for off-loading the Goods.

The Buyer will indemnify the Seller against any liability and expense (whether arising under statute or common law) caused by the Buyer's failure to provide appropriate equipment and manual labour for off-loading (whether or not the off-loading is supervised by or on behalf of the Buyer) for:

4.10.1 any personal injury to or death of any of the Seller's employees, agents or sub-contractors or any third party; and

4.10.2 any damage to or loss of any property of the Seller, its employees, agents or sub-contractors or any third party

The Seller may deliver to the Buyer Goods up to 5% more or 5% less than the quantity ordered without any adjustment in the price and the quantity delivered shall be deemed to be the quantity ordered.

The Seller may make delivery by instalments. Each separate instalment shall be invoiced and paid for in accordance with this Contract. Failure by the Seller to deliver any one or more (but not all) instalments in accordance with this Contract or any claim by the Buyer in respect of any one or more (but not all) instalments shall not entitle the Buyer to treat this Contract as repudiated. Failure by the Buyer to pay for any one or more instalments in accordance with this Contract shall entitle the Seller (without prejudice to its other rights and remedies): -

4.15.1 to suspend without notice further deliveries of Goods or goods under any other contract between the Seller and the Buyer pending payment by the Buyer; and/or

4.15.2 to treat

CLAIMS FOR SHORTAGE NON-DELIVERY AND DAMAGE ON DELIVERY

The quantity of any consignment of Goods as recorded by the Seller upon despatch from the Seller's place of business shall be conclusive evidence of the quantity received by the Buyer on delivery unless the Buyer can provide conclusive evidence proving the contrary. Where goods are accepted from the carrier without checking, the delivery sheet of the carrier must be signed, 'not examined' otherwise no claim whatsoever will be accepted. Without prejudice to clause 5.2 no claim for damages or shortages will be accepted unless notice is given in writing, both to the carrier and Seller within 3 days of delivery. In the absence of such notice the Buyer will be deemed to have accepted the Goods. No claim for non-delivery will be considered (even if caused by the Seller's negligence) unless the Seller is advised in writing within 14 days of the date of the Seller's invoice. If the goods are confirmed checked on acceptance from the carrier the number of cases/packages/pallets should be verified. In addition the condition of said cases/packages/pallets should be carefully checked to ensure that Goods are completely intact and that no tampering or interference has taken place during transit. Any evidence of tampering or interference must be noted when the goods are signed for and the Seller and carrier notified in accordance with clause 5.3. Any liability of the Seller for the Goods for damage shortages, or non-delivery in this clause 5 shall be limited to replacing the Goods within a reasonable time or at the Seller's discretion issuing a credit note at the pro rata Contract rate against any invoice raised for such Goods.

A signature of qualified acceptance on a carrier's delivery note shall not be written notice to the Seller for the purpose of these terms and conditions.

EXPORT

The Seller warrants that (subject to the other provisions of these Terms and Conditions) upon delivery and for a period of 12 months from the date of delivery the Goods will be of satisfactory quality within the meaning of the Sale of Goods Act 1994 unless agreed to the contrary by the Seller in writing. All other warranties or conditions as to quality or description are excluded. The Seller shall not be liable for a breach of the warranty in condition 7.1 if:

WARRANTY

The Seller warrants that (subject to the other provisions of these Terms and Conditions) upon delivery and for a period of 12 months from the date of delivery the Goods will be of satisfactory quality within the meaning of the Sale of Goods Act 1994 unless agreed to the contrary by the Seller in writing. All other warranties or conditions as to quality or description are excluded. The Seller shall not be liable for a breach of the warranty in condition 7.1 if:

7.2.1 the defect arises because the Buyer failed to follow the Seller's oral or written instructions as to the storage, installation, commissioning, use or maintenance of the Goods or (if there are none) good trade practice; or

7.2.2 the Buyer alters or repairs such Goods without the written consent of the Seller.

If the Buyer makes a valid claim against the Seller based on a defect in the quality of the Goods under this condition 7, the Seller shall at its option repair or replace such Goods (or the defective part) or refund the price of such Goods at the pro rata Contract rate. If the Seller complies with condition 7.3 it shall have no further liability for a breach of the warranty in condition 7.1 in respect of the quality of such Goods. The Buyer is responsible unless otherwise agreed in writing for satisfying himself/itself before use of the suitability of the goods for his/its own particular purpose. The Seller at the request of the Buyer may furnish technical advice with reference to the use of the goods sold hereunder but on the express understanding that such advice is given and accepted at the Buyer's risk and the Seller shall not be liable for any loss, damage or claims arising therefrom.

LIMITATION OF LIABILITY

The following provisions and the provisions of conditions 7 and 5.3 set out the entire liability of the Seller (including any liability for the acts or omissions of its employees, agents and sub-contractors) to the Buyer in respect of:

8.1.1 any breach of these Terms and Conditions; and

8.1.2 Any representation, statement or tortious act or omission including negligence arising under or in connection with the Contract.

All warranties, conditions and other terms implied by statute or common law (save for the conditions implied by section 12 of the Sale of Goods Act 1979) are excluded from the Contract. Nothing in these Terms and Conditions excludes or limits the liability of the Seller for death or personal injury caused by the Seller's negligence or fraudulent misrepresentation.

THE BUYER'S ATTENTION IS IN PARTICULAR DRAWN TO THE

PROVISIONS OF CONDITIONS 8.4 AND 8.5

Subject to conditions 8.2 and 8.3:

8.4.1 the Seller's total liability in contract, tort (including negligence or breach of statutory duty), misrepresentation or otherwise, arising in connection with the performance or contemplated performance of this Contract shall be limited to the contract price; and

8.4.2 the Seller shall not be liable to the Buyer by reason of any representation or any implied warranty, condition or other term or any duty at law or under the express terms of this Contract for any loss of profit, loss of business, depletion of goodwill, or any indirect or consequential loss or damage, costs, expenses or other claims for consequential compensation whatsoever (whether or not caused by the negligence of the Seller, its employees, agents or sub-contractors) which arise out of or in connection with the Contract. The Buyer will indemnify the Seller against all damages, penalties, costs and expenses to which the Seller may become liable as a result of work done in accordance with the Buyer's specification which involves the infringement of any letters patent, registered design or copyright.

FORCE MAJEURE

The Seller shall not be liable to the Buyer in any manner or be deemed to be in breach of this Contract (subject to condition 8) because of any delay in performing or any failure to perform any of the Seller's obligations under this Contract if the delay or failure was due to any cause beyond the Seller's reasonable control. Without prejudice to the generality of condition 9.1 the following shall be included as causes beyond the Seller's reasonable control:

9.2.1 governmental actions, war or threat of war, national emergency, riot, civil disturbance, sabotage or requisition;

9.2.2 Act of God, fire, explosion, flood, epidemic or accident;

9.2.3 import or export regulations or embargoes;

9.2.4 labour disputes not including disputes involving the Seller's work-force; or

9.2.5 inability to obtain or delay in obtaining supplies of adequate or suitable material, fuel, parts, machinery or labour

PASSING OF PROPERTY AND RISK

Risk of damage to or loss of Goods shall pass to the Buyer upon delivery to the Buyer or its agent. Ownership of the Goods shall not pass to the Buyer until the Seller has received in full (in cash or cleared funds) all sums due to it in respect of:

10.2.1 the Goods; and

10.2.2 all other sums which are or which become due to the Seller from the Buyer on any account.

Until ownership of the Goods has passed to the Buyer, the Buyer must:

10.3.1 hold the Goods on a fiduciary basis as the Seller's bailee;

10.3.2 store the Goods (at no cost to the Seller) separately from all other goods of the Buyer or any third party in such a way that they remain readily identifiable as the Seller's property;

10.3.3 not destroy, deface or obscure any identifying mark or packaging ing on or relating to the Goods;

10.3.4 maintain the Goods in satisfactory condition.

The Buyer may resell the Goods before ownership has passed to it solely on the following conditions:

10.4.1 any sale shall be effected in the ordinary course of the Buyer's business at full market value and the Buyer shall account to the Seller accordingly for the Goods;

10.4.2 any such sale shall be a sale of the Seller's property on the Buyer's own behalf and the Buyer shall deal as principal when making such a sale;

10.4.3 the Buyer's right to resell the Goods shall cease upon the termination of the Contract; and

Where the Seller is unable to determine whether any goods are the Goods, the Buyer shall be deemed to have sold all goods of the kind sold by the Seller to the Buyer in the order in which they were invoiced to the Buyer. The Seller shall be entitled to recover payment for the Goods notwithstanding that ownership of any of the Goods has not passed from the Seller. The Buyer grants the Seller, its agents and employees an irrevocable licence at any time to enter any premises where the Goods are or may be stored in order to inspect them, or, where the Buyer's right to possession has terminated, to recover them and if necessary to dismantle them from anything to which they are attached.

If the Buyer ceases to trade or commits any act of bankruptcy or if a Receiver of the Buyer's undertaking is appointed the Seller may recover the Goods from the Buyer.

PRICE

The price for the Goods is based on the cost of materials, labour, sub-contracts, transport, taxes, duties and currency exchange rates ruling at the date of quotation. The Seller reserves the right to amend the Contract price to take account of any variations in these costs or any new taxes or duties occurring from whatever cause before delivery of the Goods. In the event of such an amendment of the contract price, the Buyer has the right to terminate the contract by serving written notice on the Seller within 7 days of the Buyer being notified of the amendment. The price for the Goods is exclusive of any value added tax or any other applicable tax which the Buyer shall pay in addition when it is due to pay for the Goods. The price for the Goods is given on an ex-works basis (unless agreed otherwise by the parties) and where the Delivery Point is other than at the Seller's premises the Buyer shall pay the Seller's charges for packaging, loading and insurance in addition when it is due to pay for the Goods.

TERMS OF PAYMENT

The Seller may invoice the Buyer for the Goods at any time after delivery. Unless otherwise agreed in writing payment in full for the price of the Goods is due within 30 days from the end of the month following the month in which the Goods are invoiced. Time for payment shall be of the essence. No payment shall be deemed to have been received until the Seller has received clear funds.

All payments payable to the Seller under this Contract shall become due immediately upon termination of this Contract despite any other provision.

The Buyer shall make all payments due under this Contract without any deduction whether by way of set-off, counterclaim or otherwise unless the Buyer has a valid court order requiring an amount equal to such deduction to be paid by the Seller to the Buyer. The Seller may appropriate any payment made by the Buyer to the Seller to such of the Goods as the Seller thinks fit despite any purported appropriation by the Buyer. The Buyer shall be liable for interest at the rate of 4 per cent per annum above Barclays Bank Base Rate upon so much of the amount of the invoice that shall remain unpaid after the due date until the day payment is received, provided that no time or indulgence granted by the Seller shall prejudice the Seller's rights to recover all amounts unpaid together with interest at any time after the due date.

TERMINATION

The Contract will terminate immediately upon the happening of any one or more of the following events; the Buyer has a bankruptcy order made against him/it or makes an arrangement or composition with his/its creditors or otherwise takes the benefit of any Act for the time being in force for the relief of insolvent debtors, or (being a body corporate) convenes a meeting of creditors (whether formal or informal) or enters into liquidation (whether voluntary or compulsory), except a solvent voluntary liquidation for the purpose only of reconstruction or amalgamation, or has a receiver, manager, administrator or administrative receiver appointed of its undertaking or any part thereof, or a resolution is passed or a petition presented to any court for the winding-up of the Buyer or for the granting of an administration order in respect of the Buyer or any proceedings are commenced relating to the insolvency or possible insolvency of the Buyer.

The Contract will terminate immediately upon service of written notice of termination by the Seller on the Buyer on the happening of any one or more of the following: the Buyer suffers or allows any execution whether legal or equitable to be levied on his/its property or obtained against him/it, or fails to observe or perform any of his/its obligations or duties under the Contract or any other contract between the Seller and the Buyer or is unable to pay its debts within the meaning of section 123 of the Insolvency Act 1986 or the Buyer ceases to trade.

13.2.1 The Seller's rights contained in condition 10 (but not the Buyer's rights) shall continue beyond the discharge of the Buyer's and the Seller's primary obligations under the Contract consequent upon its termination.

13.2.2 The termination of the Contract howsoever arising shall be without prejudice to the rights and duties of either the Buyer or the Seller accrued prior to termination.

GENERAL

Time for performance of all obligations of the Buyer is of the essence. Each right or remedy of the Seller under this Contract is without prejudice to any other right or remedy of the Seller whether under this Contract or not. Any provision of this Contract which is held by any competent authority to be invalid, void, voidable, unenforceable or unreasonable (in whole or in part) shall to the extent of such invalidity, voidness, voidability, unenforceability or unreasonableness be deemed severed and the other provisions of this Contract and the remainder of such provision shall not be effected. aiture by the Seller to enforce or partially enforce any provision of this Contract will not be construed as a waiver of any of its rights under this Contract. The parties to this Agreement do not intend that any of its terms will be enforceable by virtue of the Contracts (Rights of Third Parties) Act 1999 by any person not a party to it. The formation, construction, performance, validity and all aspects of this Contract are governed by English law and the parties submit to the exclusive jurisdiction of the English Courts.

Privacy Policy

Please follow link below for our full Privacy Policy:
<https://www.cubr.alco.com/terms-conditions/>

CuBrAlco Limited
Firs Industrial
Estate
Kidderminster
Worcestershire
DY11 7QN
United Kingdom

CuBrAlcoTM

Professional Plumbing Products



UK Trade Catalogue

Tel: 01562 825152

www.cubralco.com

E: sales@cubralco.com